

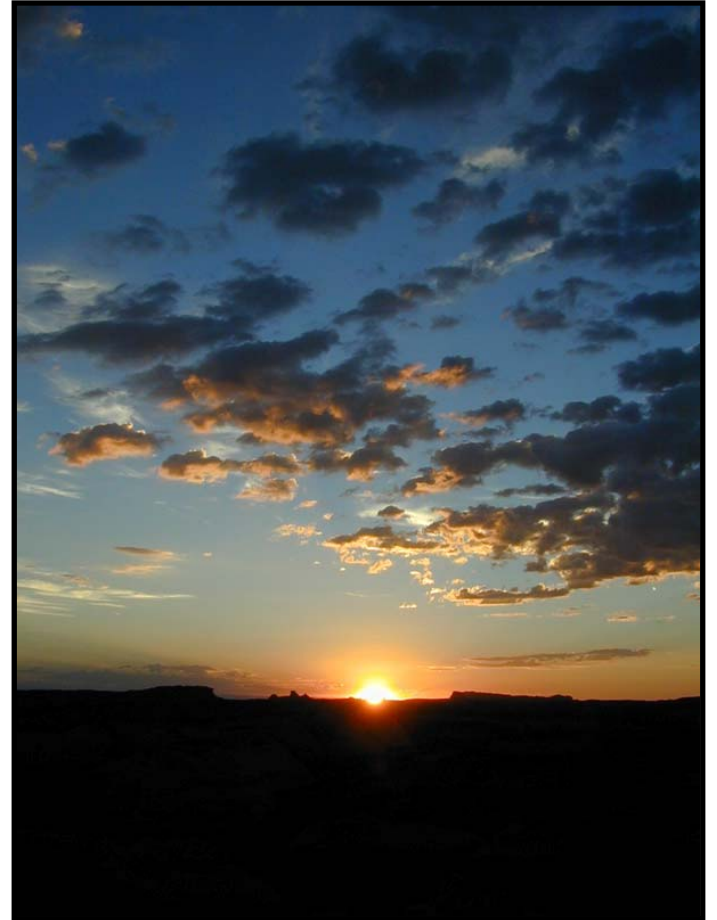
Wasatch Front Regional Transportation Plan

Wasatch Choices 2040 Regional Visioning Process



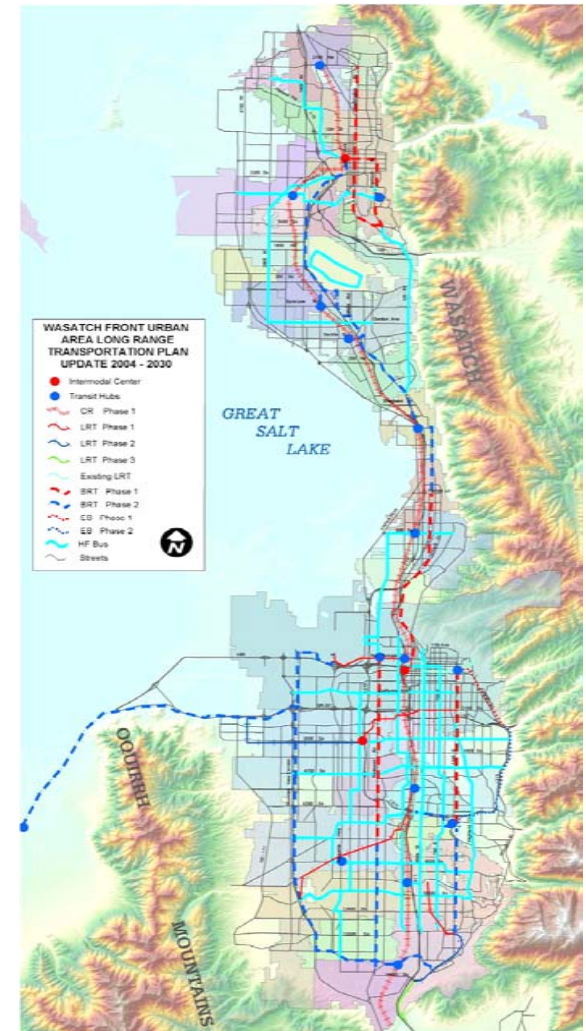
Our Region's Transportation

- **How do we create the best transportation system for us, our children, our grandchildren?**



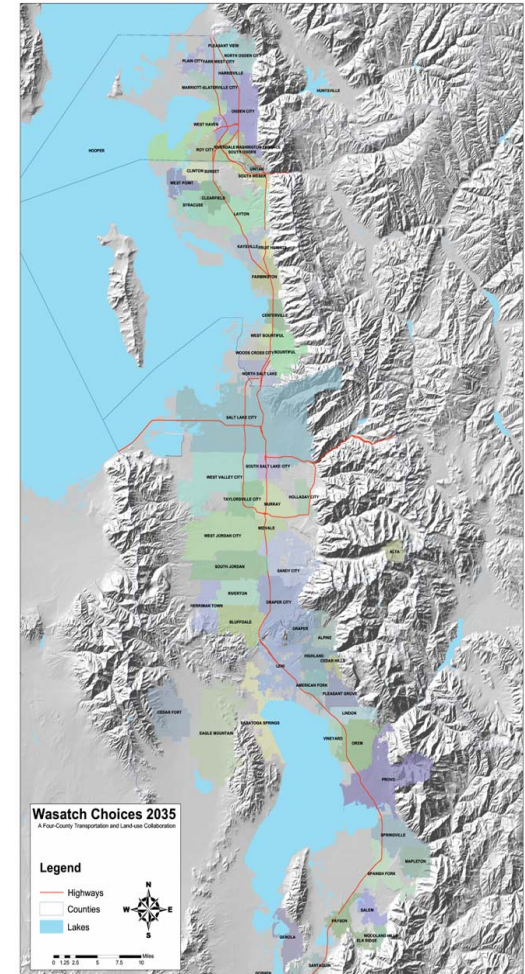
Regional Transportation Plan – RTP

- Provides guiding policy for
 - highways
 - public transit systems
 - bikeways and trails
- Addresses Growth and Congestion
- Prioritizes federal projects
- Forms basis of 5-year TIP



The Next RTP Process

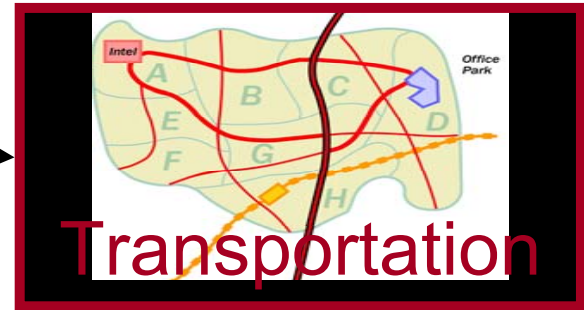
- **New Features**
 - Integrated with MAG
 - Safety and homeland security
 - Advanced environmental planning
- **New Approach:**
Wasatch Choices 2040
 - Growth principles and strategies
 - Recognize interaction between land use & transportation
- **Envision Utah invited to facilitate the visioning process**



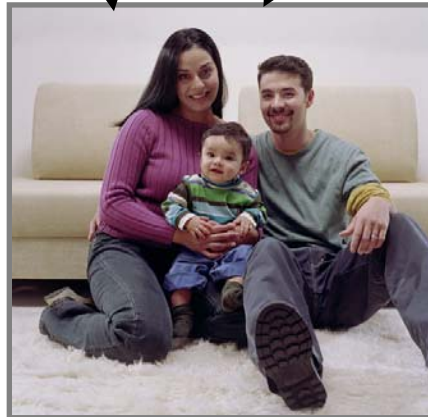
The Visioning Process

- **Create alternative 30-year future scenarios**
- **Broad-based, grassroots public process**
- **Steering Committee guides the process**
- **Land use remains under local control**
- **Visioning process outcomes will guide creation of the RTP**

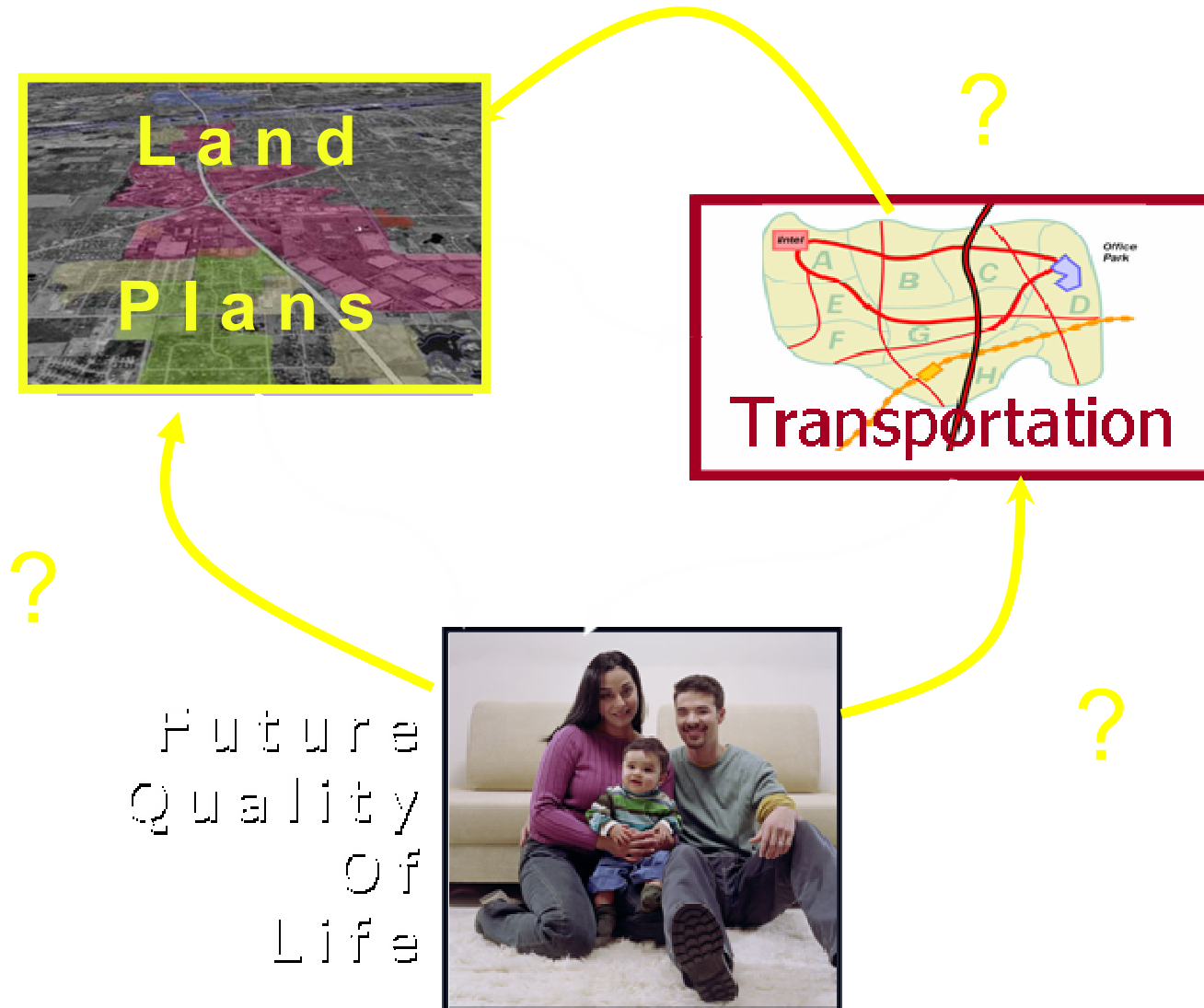
Conventional approach: one-way communication



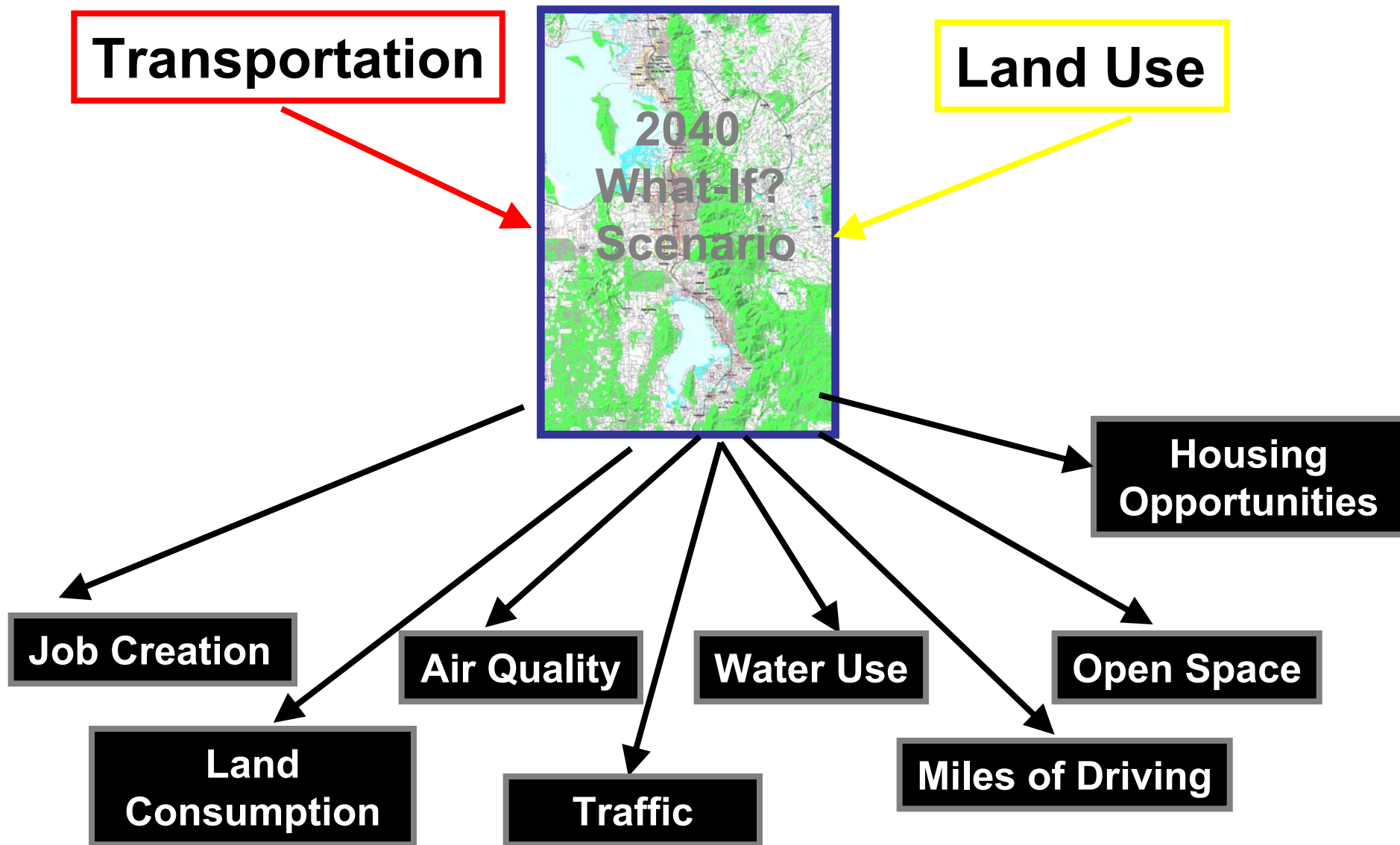
**Future
Quality
Of
Life**



Wasatch Choices: two-way dialogue



Evaluating the Scenarios



Stakeholder Workshops

Process: Groups 'build' their vision of:

- Roads and transit
- Neighborhoods & commerce
- Open space

Participants:

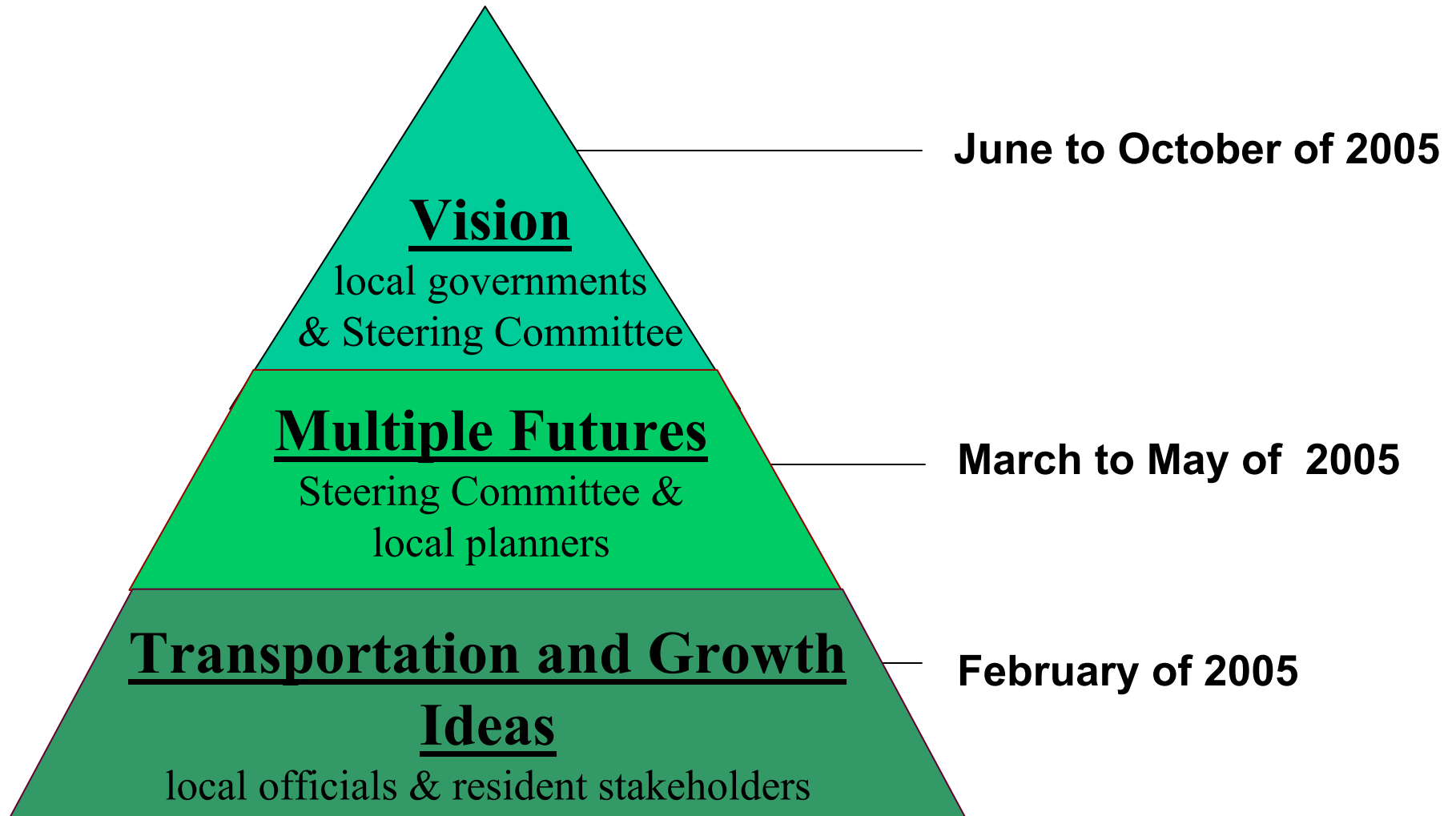
- Local officials
- Resident stakeholders



Product:

- A range of ideas to develop the scenarios

Creating a Vision



Benefits from the Visioning Process

- **Enhances economic vitality and job creation**
- **Reduces gridlock**
- **Cleaner air**
- **Reduces sprawl**
- **Conserves water**
- **Improves housing affordability**



Wasatch Front Regional Transportation Plan

Wasatch Choices 2040 Regional Visioning Process

