

COUNCIL TRANSMITTAL

TO: Rocky J. Fluhart,
Chief Administrative Officer

DATE: January 24, 2006

FROM: Russell B. Pack, Interim Executive Director of Airports

SUBJECT: Briefing on General Airport Matters

STAFF CONTACT: Russell B. Pack, 575-2048

BACKGROUND/DISCUSSION:

- General Overview. The Airport Department operates and manages three airports in system. The Airport Board, appointed by the Mayor, acts in an advisory capacity. The Department has 575 employees. The Airport campus, including employees of vendors and airlines, has 13,500 people.
- Enterprise Fund. The Airport is self-sustaining. Capital projects are funded through revenues, grants and facility charges.
- Statistical Information. Passenger numbers are at an all-time high of 22.2 million. The Airport complex includes significant facilities and improvements.
- Air Service. Air service is exceptional in terms of non-stop options and markets.
- Terminal, Landside, and Airfield Improvements. Capital projects are being undertaken consistent with the Master Plan. Landside projects are underway and will improve services for local users. Projects are demand-driven with phasing opportunities.
- Terminal Projects. Current construction is intended to address interim issues. International gates have been expanded to accommodate international traffic. Circulation areas are undergoing expansion.

Salt Lake City Department of Airports



Salt Lake City Department of Airports

A Department of Salt Lake City Corporation



Owns and operates a system of three airports:

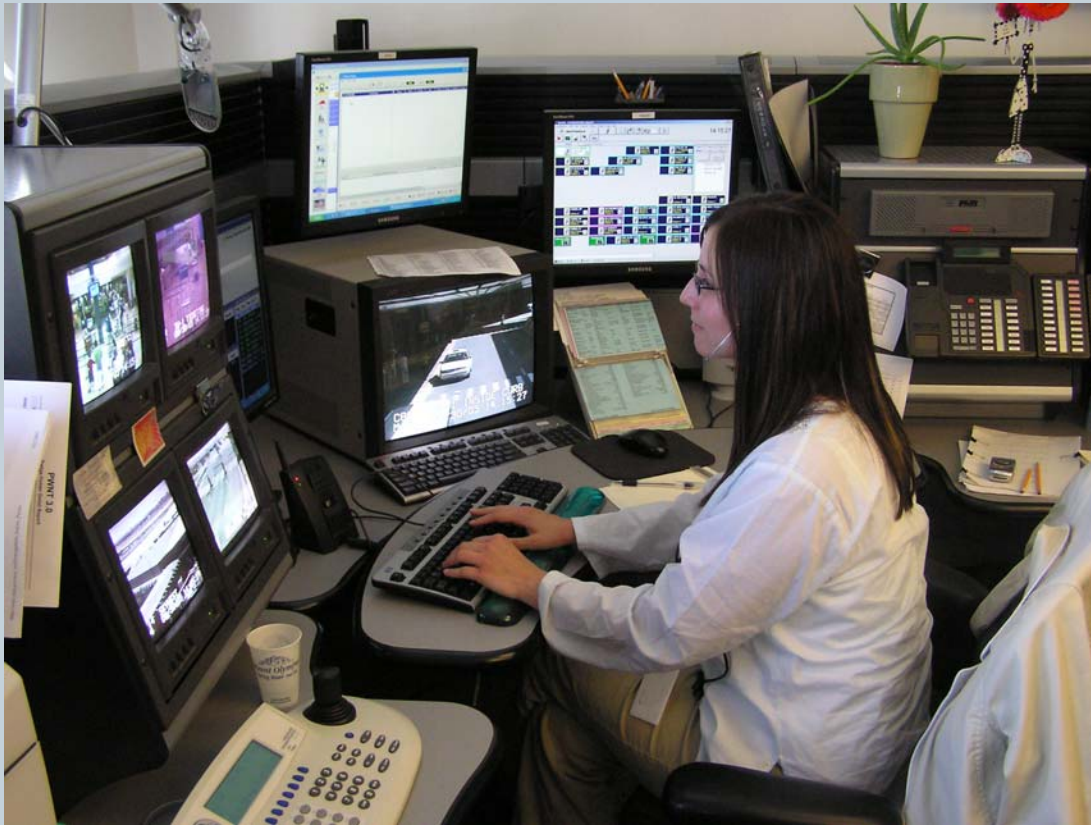
- **Salt Lake City International Airport**
- **Airport 2**
- **Tooele Valley Airport**

Salt Lake City Department of Airports



- **The Mayor, the City Council, and a nine-member advisory board of citizen volunteers oversee Airport operations**
- **Executive Director, appointed by the Mayor, leads a staff of eight directors**
- **Self-sustaining enterprise fund**

Employees



- **575 employees of Salt Lake City Department of Airports**
- **13,500 employees of our vendors and airlines**

Salt Lake City International Airport



Revenues generated from:

- Terminal rents
- Landing fees
- Concession charges
- Leased areas

Capital Improvements funded from:

- Earned revenues
- Federal Aviation Administration (FAA) grants
- Passenger Facility Charges (PFCs)
- Airport revenue bonds



Salt Lake City International Airport



Data Year-end 2005:

- 22.2 million passengers
- 455,472 aircraft operations
- Delta Air Lines' 3rd largest hub

Salt Lake City International Airport

A Few Facts



- 8,000 acres
- 3.2 million square feet of buildings
- 1,200 acres of ramps, runways, and roads
- 12,000 runway, taxi, ramp, and street lights
- 8 million feet of underground cable
- 680,000 tons of snow removed each year

Economic Impact

- Salt Lake City International Airport

- **101,257 jobs with salary and benefits earnings of \$2.7 billion per year**
- **Generates spending of \$5.34 billion per year for goods and services**
- **5th largest employment site in Utah**

15 Airlines Serve Salt Lake City International Airport

- American
- Continental
- Continental Express
- Delta
- Delta Connection/ASA
- Delta Connection/Shuttle America
- Frontier
- jetBlue
- Northwest
- Northwest Airlink/Mesaba
- Salmon Air
- Southwest
- Skywest
 - United Express/Skywest
 - Delta Connection/Skywest
- United
- US Air

The map displays the United States with Salt Lake City (SLC) marked as a central hub with a black star. Numerous blue lines represent flight routes radiating from SLC to various cities across the country. The cities are labeled with their names. An inset map in the bottom left corner shows a detailed view of the southwestern United States, with SLC again marked as a hub and routes connecting to cities like Sun Valley, Pocatello, Jackson Hole, Casper, Vernal, Moab, Cedar City, St. George, Elko, and Twin Falls.

Puerto Vallarta

All Top Fifty Salt Lake City Markets will be Served on a Nonstop Basis

Top 50 Salt Lake City O&D Markets

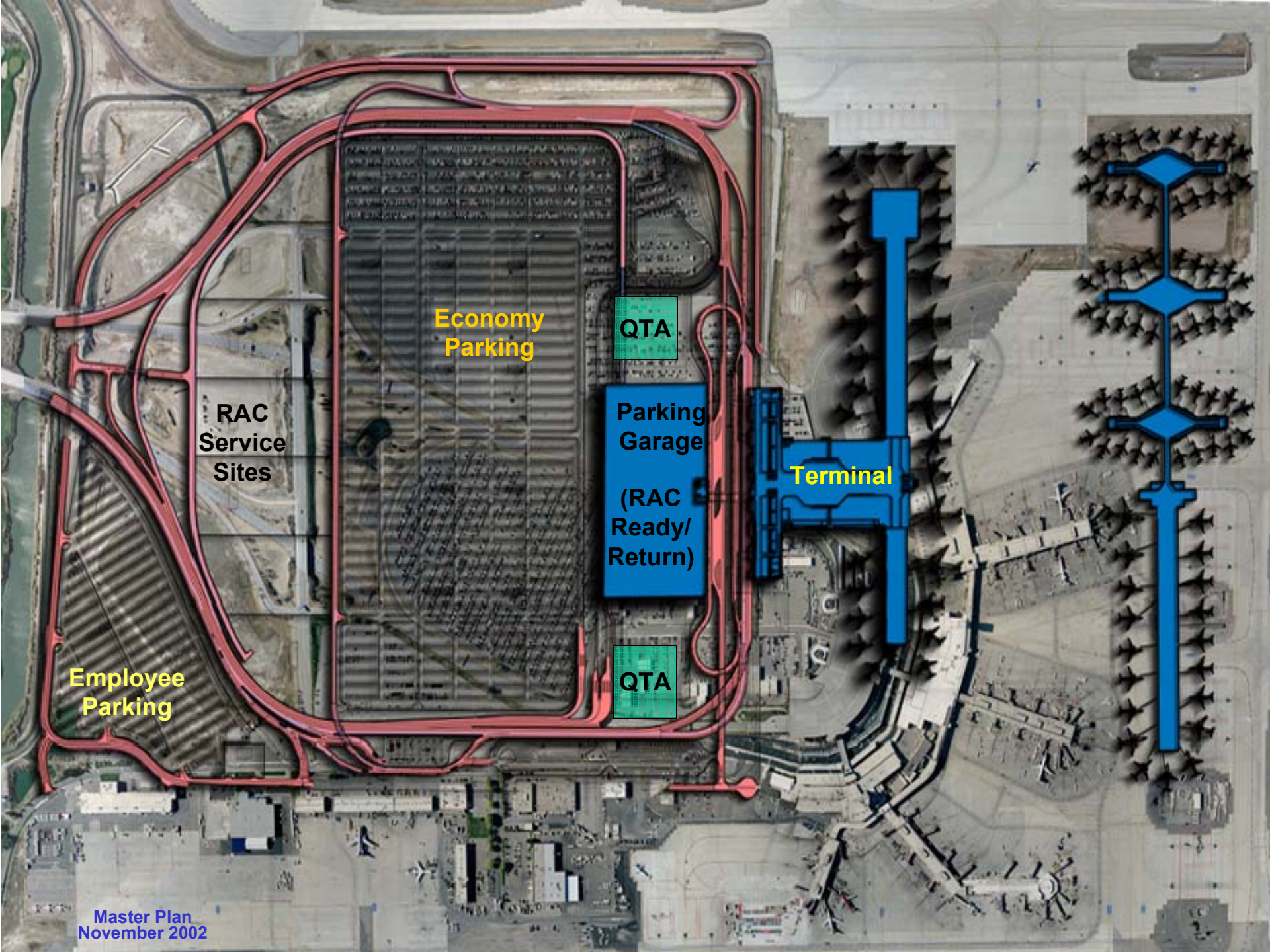
CY 2005

O&D Rank	City	O&D Rank	City	O&D Rank	City
1	Phoenix	18	San Francisco	35	Fort Lauderdale
2	Los Angeles	19	Boise	36	Cincinnati
3	New York	20	Baltimore	37	Tampa
4	Las Vegas	21	Ontario	38	Raleigh/Durham
5	Seattle/Tacoma	22	Reno	39	San Antonio
6	Oakland	23	Boston	40	Austin
7	Denver	24	San Jose	41	New Orleans
8	Orange County	25	Minneapolis	42	Nashville
9	Portland	26	Philadelphia	43	Colorado Springs
10	San Diego	27	Kansas City	44	Oklahoma City
11	Chicago	28	Albuquerque	45	Fresno
12	Atlanta	29	Spokane	46	Omaha
13	Washington	30	Tucson	47	Cleveland
14	Dallas/Fort Worth	31	Detroit	48	Indianapolis
15	Orlando	32	St. Louis	49	Missoula
16	Houston	33	Honolulu	50	Columbus
17	Sacramento	34	Long Beach		

Salt Lake City Department of Airports

Landside Improvements

- **1st step in implementing Master Plan**
- **Consolidate employee parking**
- **Consolidate long term parking**
- **Single toll plaza**
- **Simplify shuttle bus routes**
- **Improve safety for shuttle buses by eliminating short merge/weave distances**



**Economy
Parking**

QTA

**Parking
Garage**

**(RAC
Ready/
Return)**

Terminal

QTA

**RAC
Service
Sites**

**Employee
Parking**

November
2006

**Economy
Parking**

**Future
RAC
Service
Sites**

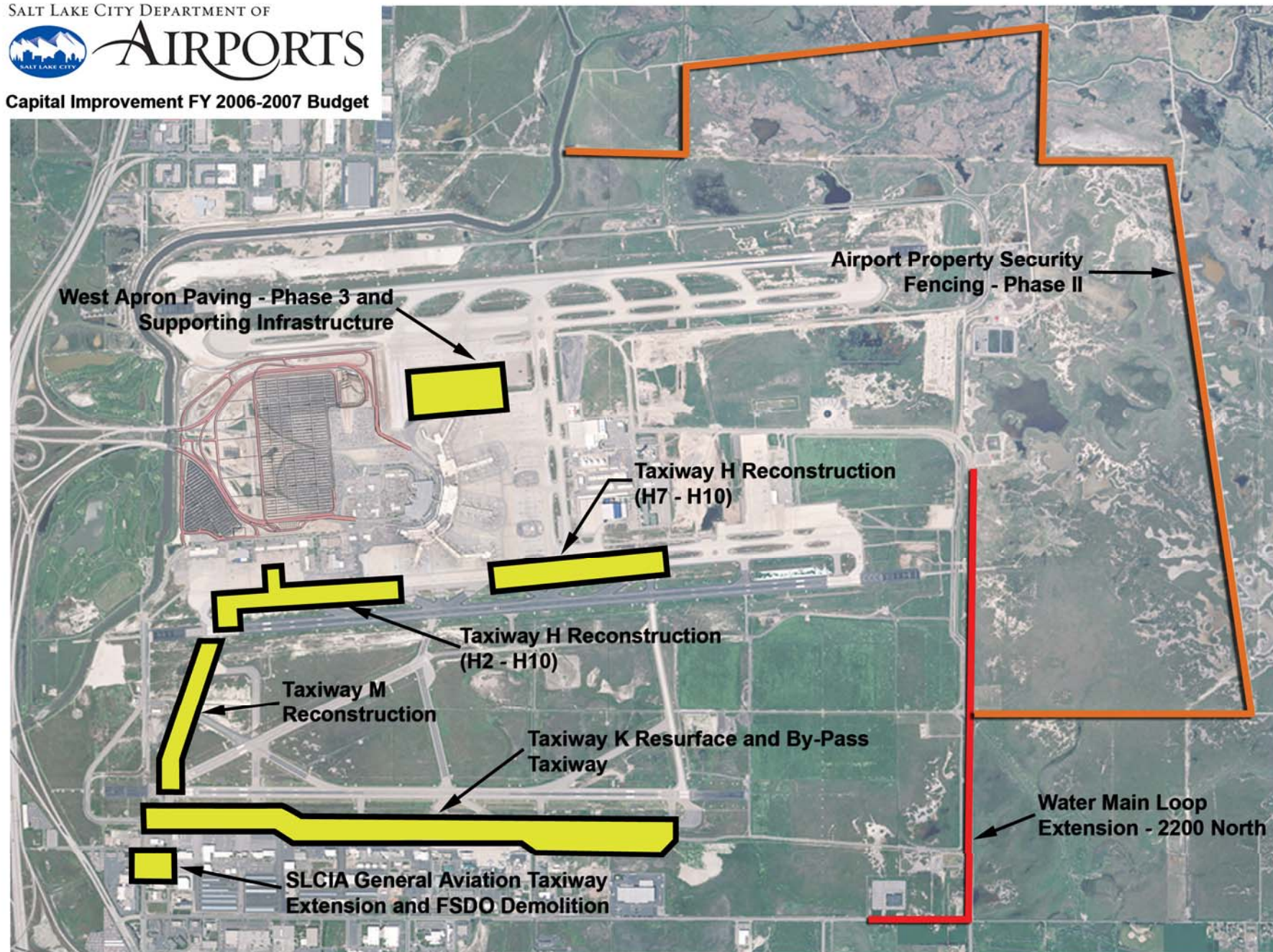
**Employee
Parking**

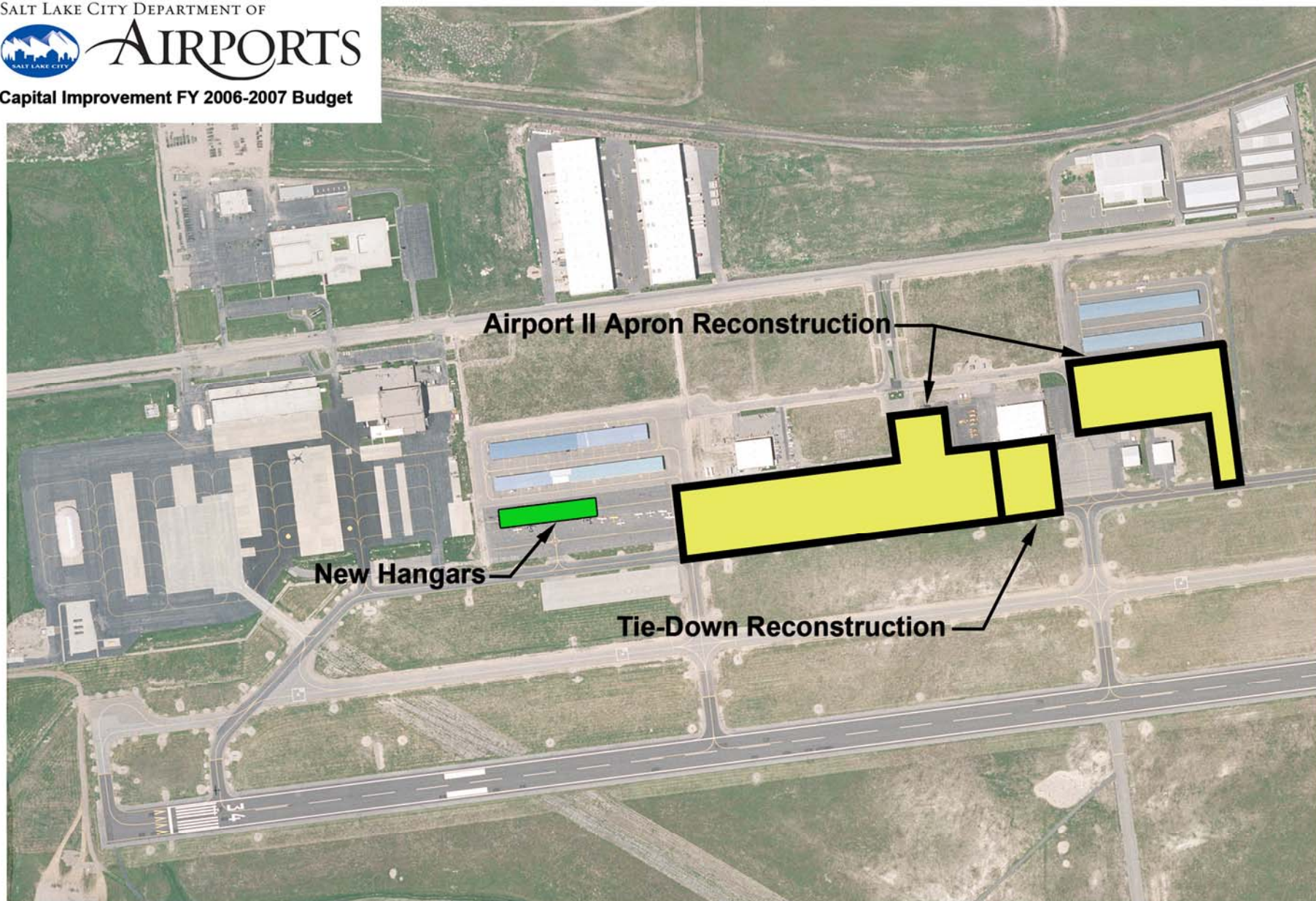


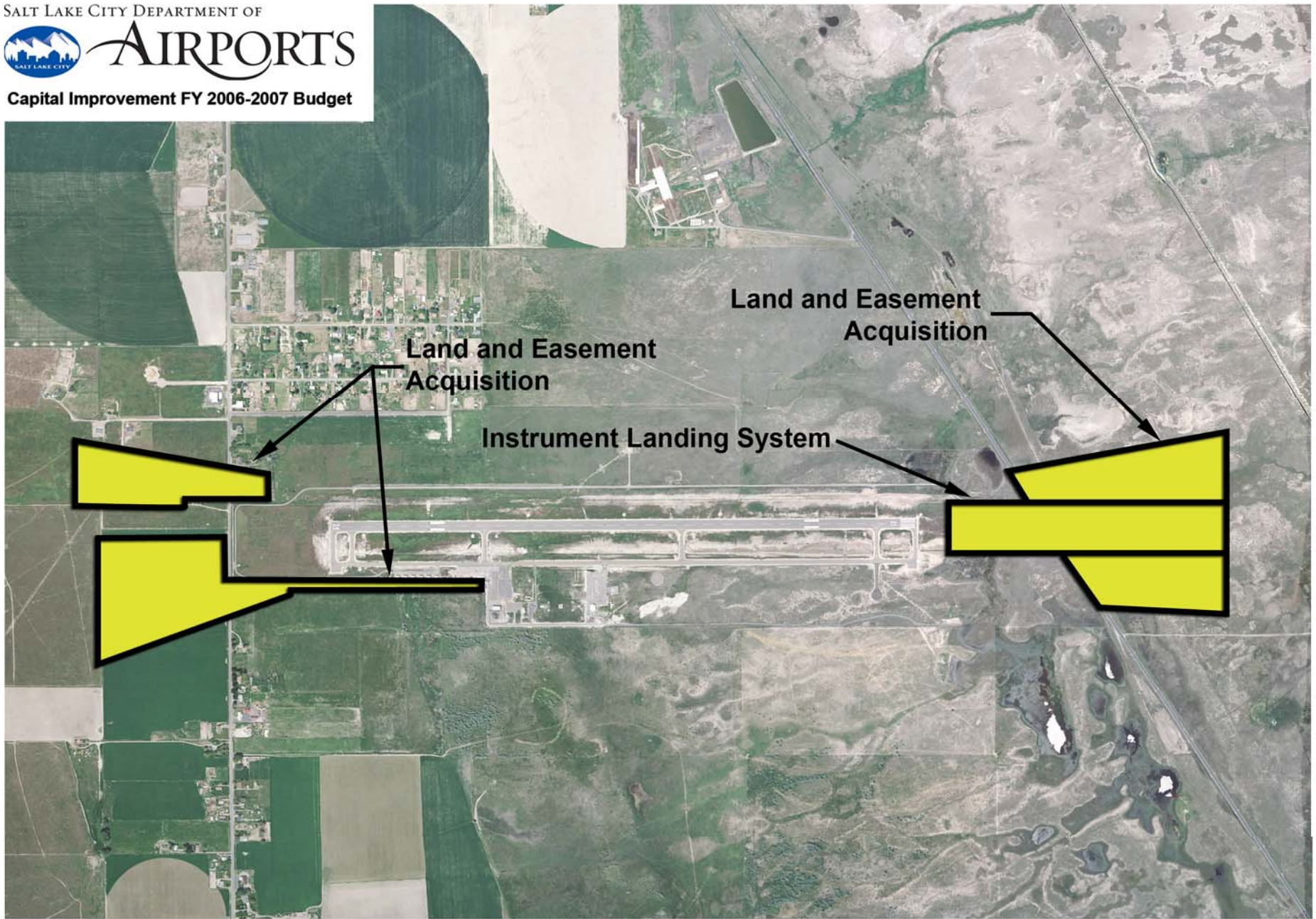
New Park and Wait Lot



Airfield Improvements







Salt Lake City Department of Airports

Terminal Improvements

- **Extend sterile corridor to accommodate additional International flights**
- **Add 2 new passenger screening lanes in TU2 & 1 new lane in TU1**
- **Enhance screening process for checked baggage**
- **Create additional meeter/greeter waiting areas & add concessions in both terminals**
- **Reduce congestion and improve passenger circulation in terminal lobbies**



FIS Sterile Corridor Extension



Terminal 2 Bag Claim & Circulation Improvements

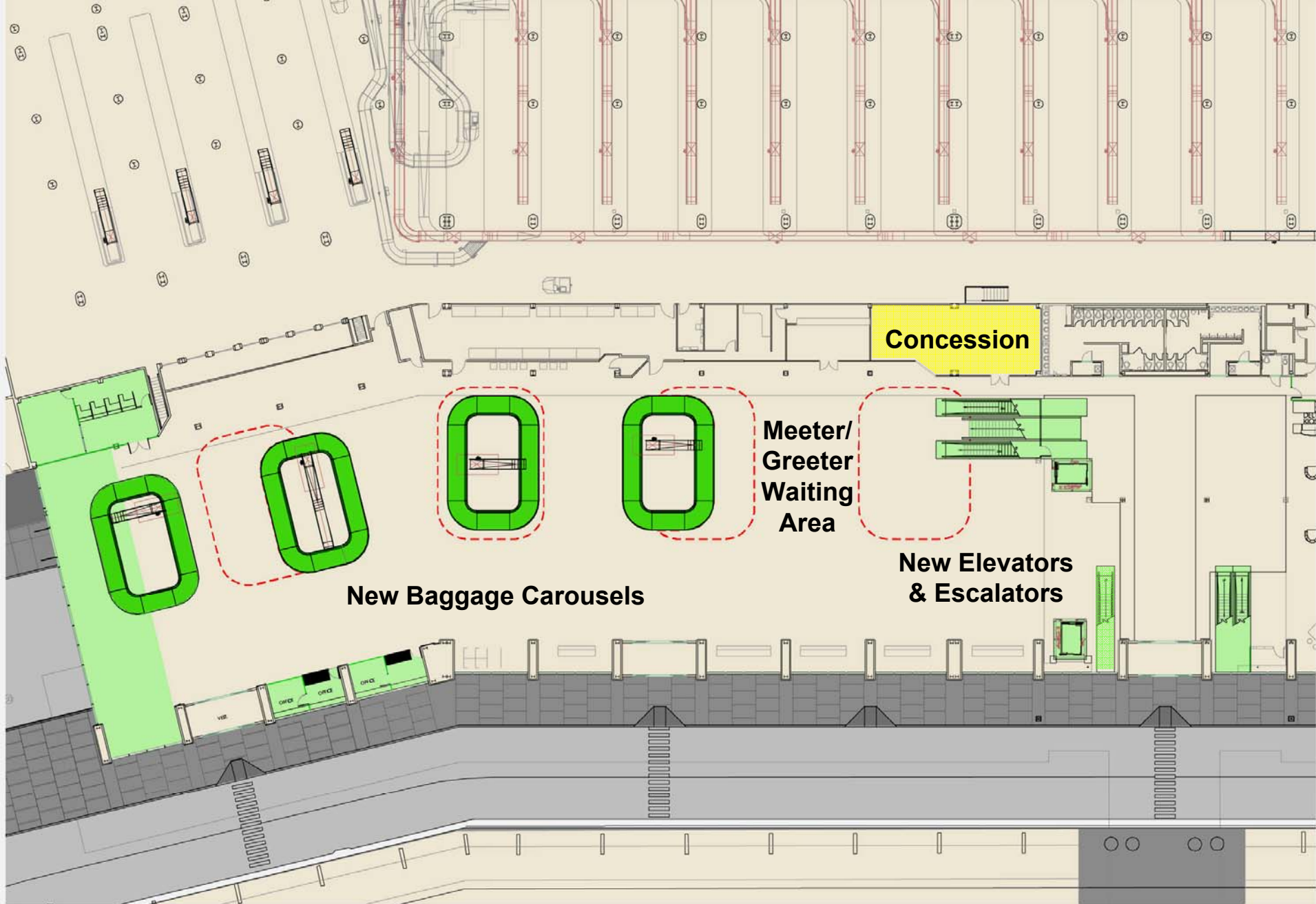


 **To All Gates** **Ticketing** 

Rental Cars  **Parking** **P**
City Bus  Hourly/Daily 

Drop & Go
All Gates
Baggage
Claim

ATM



Concession

**Meeter/
Greeter
Waiting
Area**

New Baggage Carousels

**New Elevators
& Escalators**

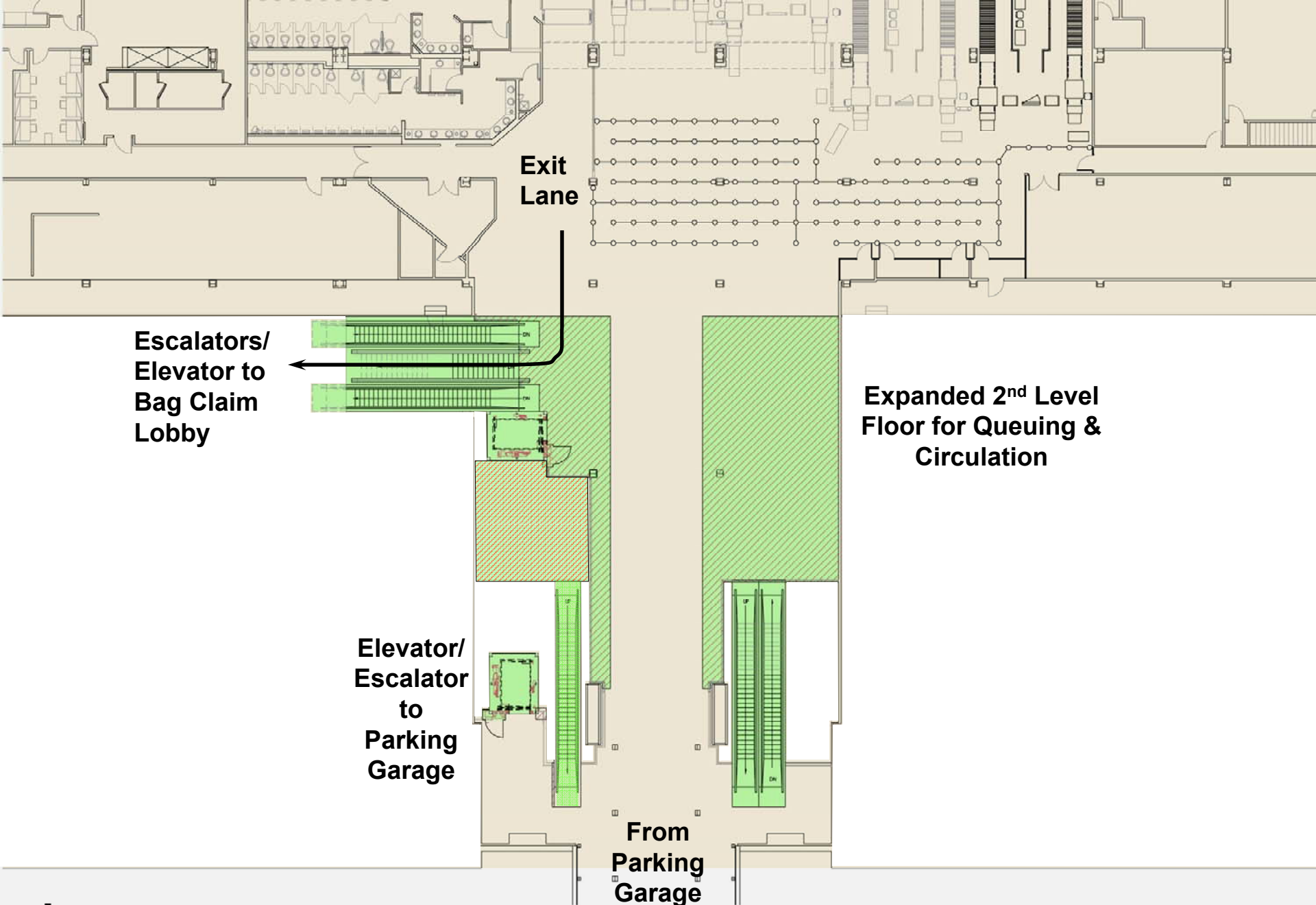


15' 0' 15' 30'

scale = 1" = 15'

Terminal Two Ground Level Floor Plan





**Expanded 2nd Level
Floor for Queuing &
Circulation**

**Escalators/
Elevator to
Bag Claim
Lobby**

**Elevator/
Escalator
to
Parking
Garage**

**From
Parking
Garage**

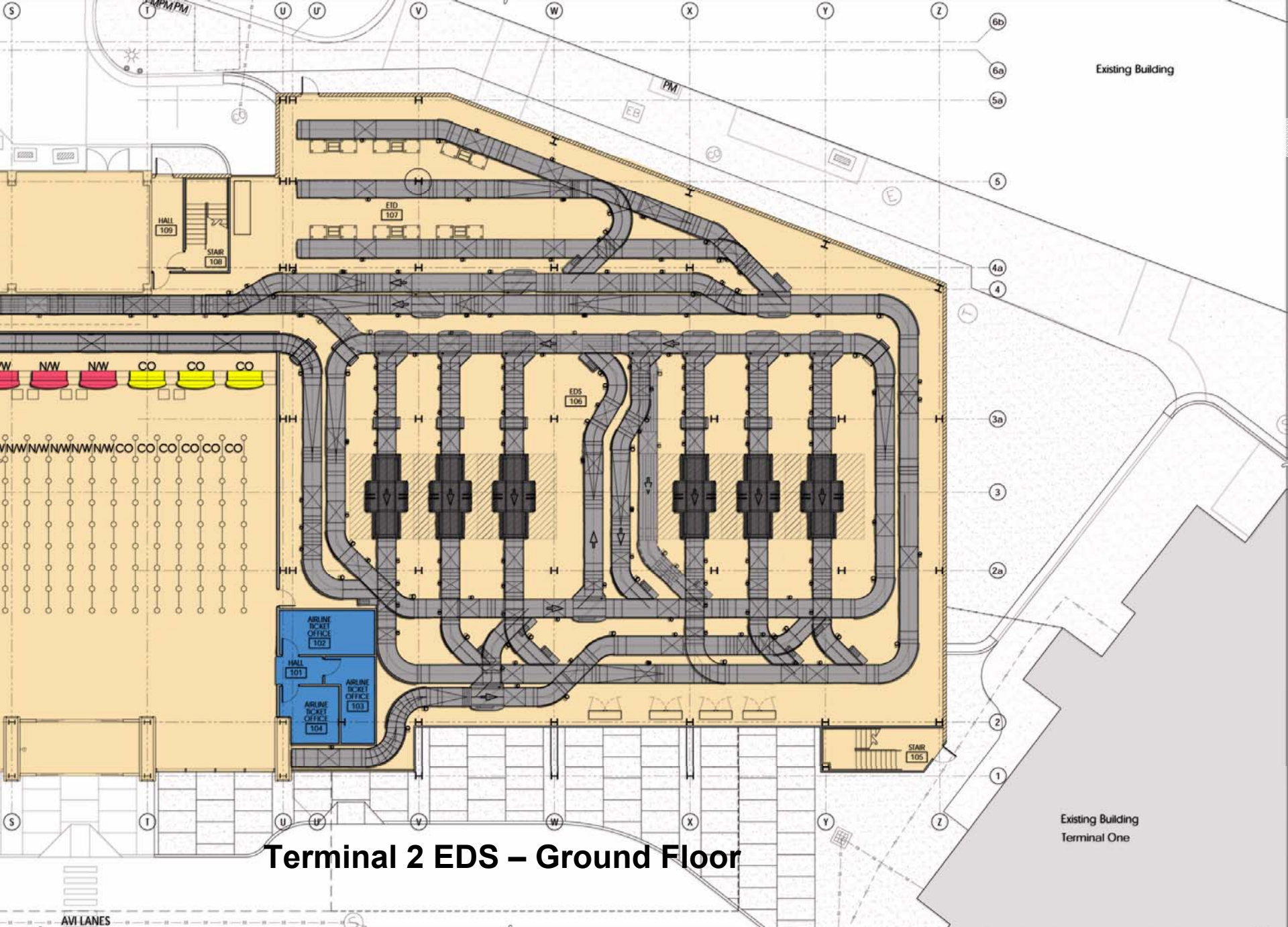
Terminal Two Second Level Floor Plan



10' 0' 10' 20'
scale = 1" = 10'



Terminal 2 EDS & Ticket Lobby Improvements



Terminal 2 EDS – Ground Floor

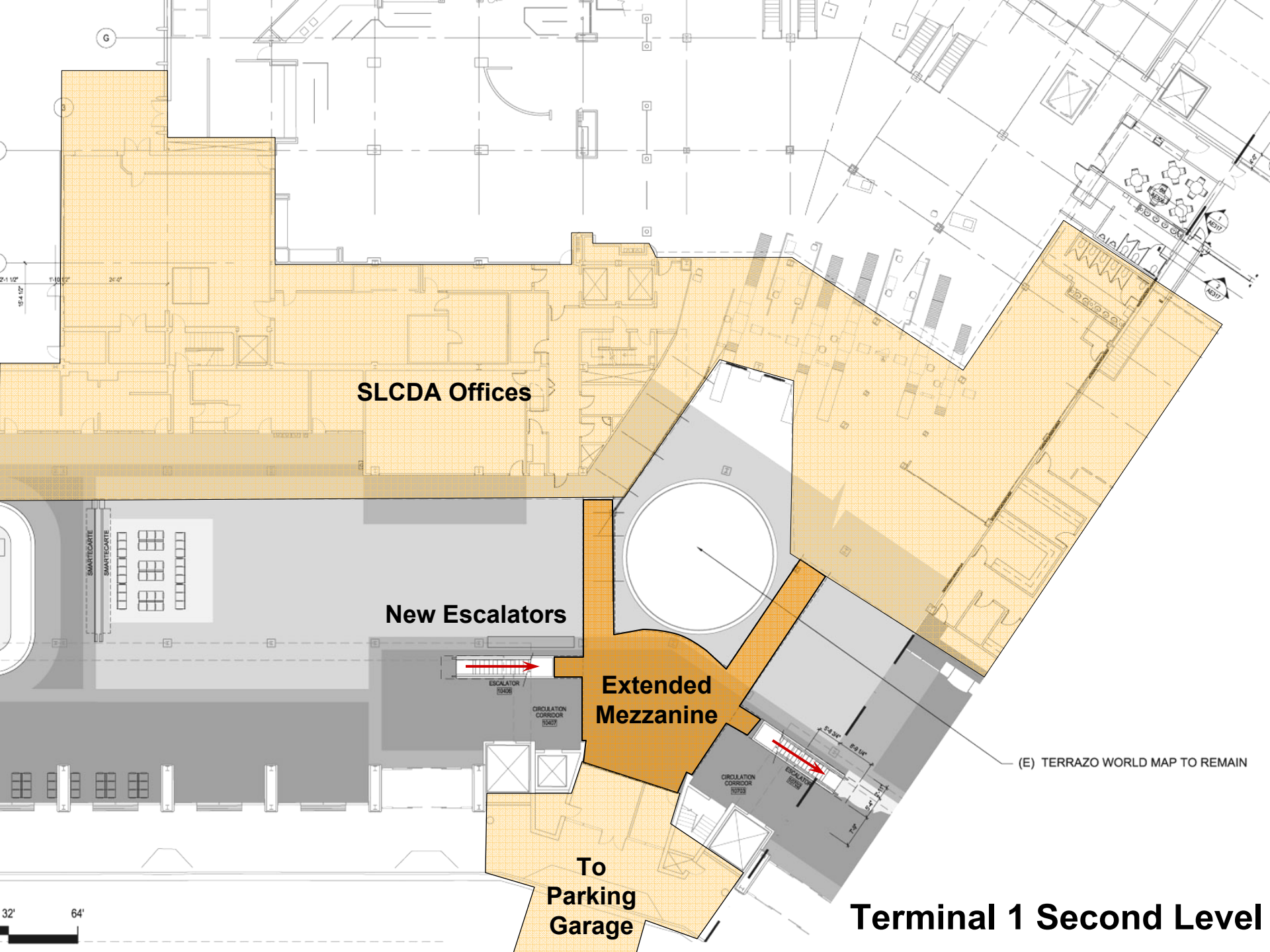


DANGER
HARD HATS &
SAFETY GLASSES
REQUIRED
IN THIS AREA
PELIGRO
SE REQUIERE CASCO
Y ANTELOJOS DE SEGURIDAD
EN ESTA AREA

**MOUNTAIN
STATES FENCE**
SOLD BY THE FOOT
800-221-4241







SLCDA Offices

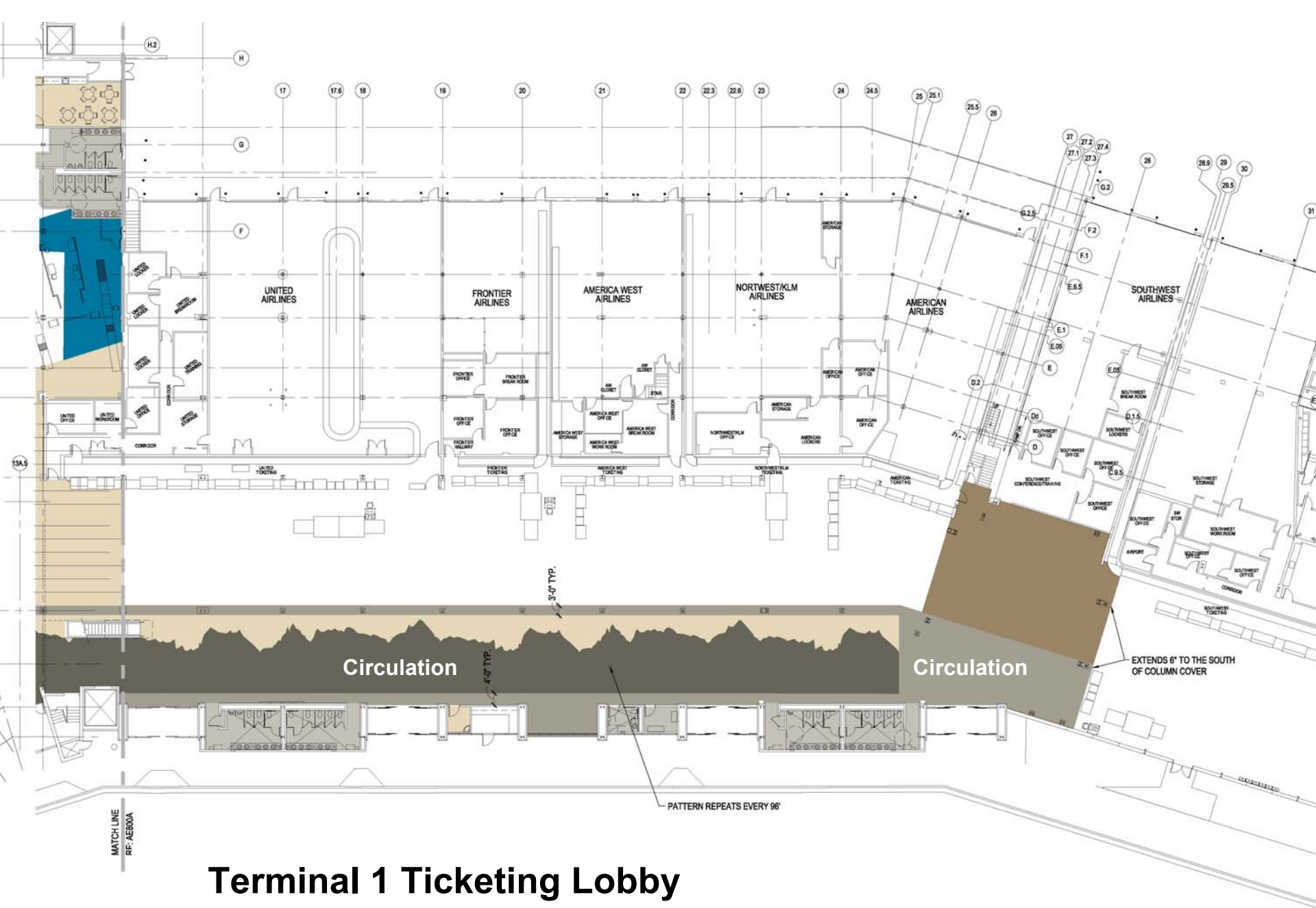
New Escalators

Extended Mezzanine

**To
Parking
Garage**

(E) TERRAZZO WORLD MAP TO REMAIN

Terminal 1 Second Level



Terminal 1 Ticketing Lobby



Terminal 1 Ticket Lobby

