

---

# M E M O R A N D U M

---

**DATE:** September 1, 2002  
**TO:** City Council Members  
**FROM:** Russell Weeks  
**RE:** Proposed Ordinance to Designate 500 West Street Park Blocks as “Public Squares, Malls, and Pleasure Grounds” in Accordance with *City Code* Section 15.12.020.  
**CC:** Cindy Gust-Jenson, Rocky Fluhart, Rick Graham, Louis Zunguze, Sam Guevara, Chris Burbank, Dave Oka, Gary Mumford, Mike Brown, Valda Tarbet, Jennifer Bruno, Janice Jardine

---

This memorandum pertains to a proposed ordinance that would amend *City Code* Section 15.12.020 to designate the “park block” medians on 500 West Street between North Temple and 400 West streets as “public squares, malls, and pleasure grounds.” The Administration’s stated intent of including the medians in the section is to implement a dusk-to-dawn curfew along their entire length.

The Administration is scheduled to brief the City Council on the proposed amendment at the Council’s work session September 5. The City Council is scheduled to consider the proposed amendment formally the same night under Council agenda’s “unfinished business” section.

## OPTIONS

- Adopt the proposed ordinance.
- Do not adopt the proposed ordinance.

## MOTIONS

- I move that the City Council adopt the ordinance amending certain sections of Chapter 15.12 of the *Salt Lake City Code* relating to public squares.
- I move that the City Council consider the next item on the agenda.

## KEY POINTS

- According to the Administration the medians – though termed “park blocks” – have never actually been designated officially for regulation.<sup>1</sup>
- The Administration would like more regulation on the medians because the medians, particularly between 250 South and 400 South Street, are “frequently the site of loitering, sleeping, camping, fighting, drug dealing and other illegal activity.”<sup>2</sup>
- According to the Police Department the proposed ordinance would help curb illegal activity because its effect would be to eliminate areas where large groups of people can congregate at night.

- Designating the medians as “public squares, malls, and pleasure grounds” would do two things:
  - It would allow the Administration to implement a dusk to dawn curfew on the medians.
  - Where designating the medians as parks could present future problems for businesses that sell alcoholic beverages, designating the medians under Section 15.12.020 would not.

## DISCUSSION/BACKGROUND

The “park blocks” along 500 West Street, and particularly between 400 South and North Temple streets, have always been a key component of developing the 650-acre Gateway District. The *Gateway District Land-Use and Development Plan*, also titled *Creating an Urban Neighborhood*, called for 400 West, 500 West (north of 400 South) and 200 South streets to be the first streets to be improved with landscaping and pedestrian amenities.<sup>3</sup> Five hundred West street also became unique in that the City acquired land on each side of the street to widen the right of way to so that at some point in the future 500 West could be the conduit for an underground rail stop at the north end of the Gateway.

The *Gateway Master Plan*, adopted in August 1998, calls for 500 West Street to become a boulevard and “greenway” containing linear parks from 900 South Street to South Temple Street. According to the *Master Plan* the linear parks were designed to meet two goals. First the greenway would “provide an area for enjoyment for all people within the Gateway.” The second goal is contained in a May 12, 1998, City Council motion in which the Council approved the location of the Intermodal Hub at 600 West 200 South. The motion reads in part:

that future regional commuter rail alignments along 500 West and 200 South streets be preserved for enhanced regional commuter rail operations and that public utilities in those corridor be located to minimize obstructions; that the *Gateway Master Plan* and the design of the facility at 600 West and 200 South streets be flexible to accommodate future regional commuter rail technologies; that, to maximize present and future regional commuter rail connection, pedestrian corridors between the Union Pacific Depot and 500 West Street, and the Rio Grande Depot and the 600 West intermodal facility be preserved and enhanced within future development plans ...

Some people have visualized the park blocks as tree-lined and similar to blocks in Portland, Oregon. Others have viewed them as ultimately becoming similar to the Third Street Promenade in Santa Monica, California. (Please see attached photo.)

Most recently, City Council decisions on the disposition of property near 500 West Street and the location of light-rail stations on 400 West and 200 South streets were based in part on the potential of 500 West Street remaining a wide boulevard.

However, for at least a year City officials have received complaints about the conduct of people on the medians at night. Some people brought events that occurred on the medians to the attention of reporters, and one broadcast reporter last November ran a two-night story titled *The Dark Side of Downtown*. (Staff has retained a copy of the story.) Earlier this summer there was a fatal shooting at 250 South 500 West.

Because of the events and growing complaints about conduct on the medians, Mayor Ross Anderson's Administration has proposed an ordinance that would amend *City Code* Chapter 15.12.020 to designate the medians between 400 South and North Temple streets as "public squares, malls, and pleasure grounds."

The proposed designation would do three things, according to the Administration:

- It would designate the medians based on their intended use as public space. According to the Administration, the medians have never officially been designated as anything. Its use by people and its maintenance by the City Parks Division have more or less made them parks by default.<sup>4</sup>
- It would allow the implementation of a dusk-to-dawn curfew on the medians. According to the Administration, the section of the City Code is one of two places where one might place restrictions such as curfews on public parks. Chapter 15.08, titled *Park and Playground Rules*, is another location. The hours of Charles Lee Miller Park, Pioneer Park and Memorial House in Memory Grove have separate entries setting use hours there.
- It would retain the potential for businesses that serve alcoholic beverages to remain on 500 West Street or locate there in the future. Utah State law does not allow businesses that serve alcoholic beverages to locate "within 600 feet of any public or private school, church, public library, public playground, or park ..."<sup>5</sup> It should be noted that the only other public space listed as a "public square, mall, or pleasure ground" is Washington Square which surrounds the City & County Building. A previous administration had Washington Square's designation changed from a park to a public square to allow a private club, Studebaker's, to locate in a building at 175 East 400 South that is across the street from the City & County Building.

According to the Police Department, implementing a curfew on the medians between 400 South and North Temple would help the department reduce criminal activity on the park blocks. According to the department, dusk to dawn generally is a time that a large percentage of the criminal activity occurs. If it were unlawful to be on the park-block medians, police officers could contact and/or arrest persons in violation of curfew. Removing individuals for minor violations would lessen the chance of more serious offences taking place.

The department notes that due to the curfew at Pioneer Park, officers see little crime occurring between dusk and dawn there. If officers see individuals in the park, they can quickly make an arrest which may lead to other violations such as possession of drugs. According to the department, people bent on criminal activity have realized the curfew at Pioneer Park is detrimental to their purposes and stay out of the park.

According to the department, if after-hour areas where it is easy to gather and conceal criminal activities are eliminated, then groups that congregate in those places become smaller or completely disperse. Eliminating those areas by implementing tools such as a curfew helps reduce drug-related activities and violent crimes that seem commonplace when large groups congregate in an area.<sup>6</sup>

If one looks at the attached statistics and maps reflecting six months of activity on or near the medians, one can see that 500 West Street and, to some extent, 600 West Street have been the locations of a number of criminal activities.

The Police Department supports the Administration's contention that establishing a dusk-to-curfew lessen the need of "police patrolling and presence" along the medians on 500 West Street because once enforcement of the curfew starts there would be smaller numbers of people which would lead to lower necessary levels of police officers. While there may be a potential for illegal activities to re-locate to other areas, there is a lesser chance for large groups of people to congregate to conduct illegal activity.

---

<sup>1</sup> August 2 letter from Rick Graham, paragraph 3.

<sup>2</sup> Administration transmittal, Page 1, last paragraph.

<sup>3</sup> *Creating an Urban Neighborhood*, Page 25, second column, top

<sup>4</sup> August 2 letter from Rick Graham, paragraph 3

<sup>5</sup> Utah Code, Title 32A

<sup>6</sup> September 1 e-mail from Lt. Mike Brown

Third Street Promenade is the heart of maturing urban entertainment district in downtown Santa Monica, California, that was developed through public/private collaboration. (Preceding page: The Entertainment Center at Irvine Spectrum.)



In the few operating UECs visitors tend to stay for a few hours and return regularly in a pattern that more closely resembles that found at shopping malls than at theme parks, although there is greater emphasis on evening activity. Regardless of the word “urban” in the name, UECs are not restricted to downtowns. They are found anywhere that enough people are found, including the suburbs and tourist spots. Nevertheless, no matter where the project happens to be, the conceptual qualities of urbanism—the density, vitality, and eclecticism of amenities—are essential.

## **TYPES OF URBAN ENTERTAINMENT CENTERS**

Urban entertainment centers generally fall into two broad categories: districts and complexes, the latter of which includes a variety of notable subtypes. What distinguishes these categories are the processes and players responsible for their development as well as differences in form, operation, and location.

### **Urban Entertainment Center Districts**

UEC districts are urban areas that have been revitalized and/or repositioned as leisure destinations through the development and renovation of properties and public spaces and the attraction of desirable tenants. For the most part, the urban structure of streets, sidewalks, and buildings remains intact, yet sometimes the street is closed to vehicular traffic and transformed into a pedestrian promenade, either permanently or during the evening. Examples include One Colorado in Pasadena and Santa Monica’s Third Street Promenade, both in California, and Times Square in New York City.

In major metropolitan areas, the “anchor” for such redevelopment may take the form of regional destinations like stadiums, arenas, and convention centers, many of which are entertainment oriented. Often, smaller-scale amenities like cinema complexes that draw from a smaller market area are sufficient to spur rejuvenation in smaller communities. Although UEC districts can emerge organi-



**MEMORANDUM**

**TO:** Russell Weeks, Policy Analyst

**FROM:** Rick Graham, Director *RJG*  
Public Services Department

**DATE:** August 2, 2006

**RE:** Response to July 28, 2006 Email – 500 West Street Commons

My briefing paper may have not been clear about the zoning issue you raised. You are absolutely correct in your belief that the property is not zoned as open space. I have learned by asking that the island probably has no zoning at all because it is part of the street right-of-way. Doug Wheelwright told me that technically, street right-of-ways are not zoned at all, and in certain situations involving encroachments or leases, abutting property zoning is cited.

I stated in my briefing report that the park island is designated as a park, loosely using the work designate because the site was designed to support park-like uses. The islands were specifically designed to encourage and support public access and use like other public spaces. Clearly, it is not a typical park, though it shares common design elements. It is a public space that encourages public attention and use.

Since it has a daily public use function it has to fall into some type of classification that allows its use to be regulated. When the island was developed no administrative action was taken to give it a proper or official designation. Because it became the Parks Division's property to manage and maintain, and because it bore similar use qualities to a park or public space, it automatically fell under pre-established park use regulations by default.

As a result of the problems the community experienced at this site the Administration looked for a solution. Since it really isn't a park, it was necessary to give it a clear and proper designation. Chapter 15.12, under 15.12.010, allows certain public properties located in commercial centers to be used for public squares, malls or pleasure grounds. Section 15.12.030 allows for restricting, and since hours of use became an issue, this section was amended so that the 500 West Street Commons had a use restriction between dusk and dawn.

You raised the issue of restricted use in Pioneer Park. Chapter 15.08, Parks and Playground Rules, allows for the establishment of Park Hours in Section 15.08.020. A former Mayor, with approval from a former City Council amended this section to excluded Pioneer Park from traditional hours of use. 15.08.020-A2., states that Pioneer Park shall be closed to the public between one-half (1/2) hour after sunset to seven o'clock (7:00) am the following morning. This section also allows for use restrictions in other public parks.

I hope this information in someway answers your questions. I have asked Chief Burbank to respond to your questions about incident statistics. I am sorry that I do not have that information.



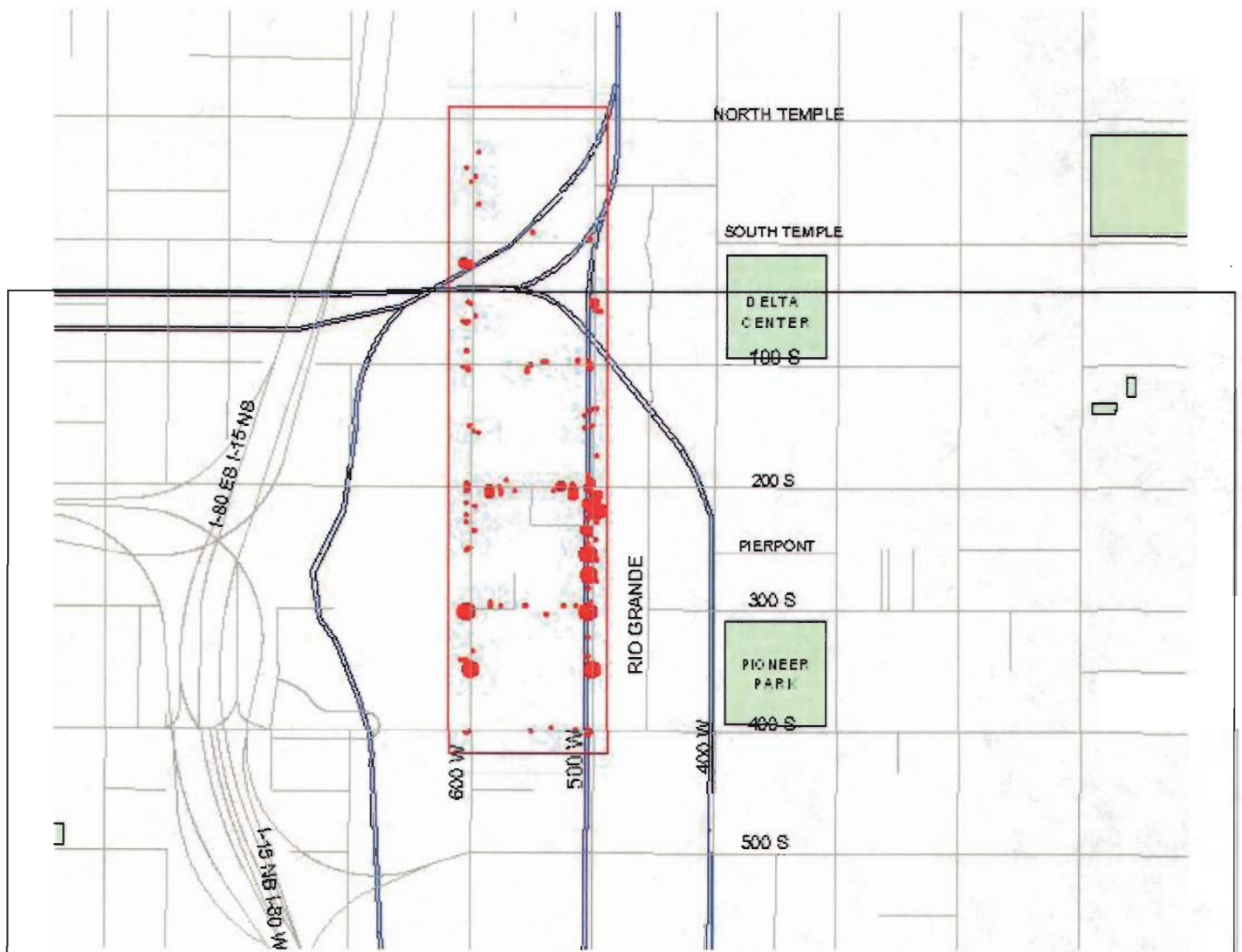
Salt Lake City Police - Offenses Reported - Feb 1 thru Jul 31, 2006

500 West "Park" Blocks (North Temple - 400 South \*see map for detail\*)

Class	Description	PART I CRIME	Other	6 month total - Offenses Reported
Persons	Aslt Agg-Non Family Id Weapon	2		2
	Aslt Agg-Non Family Strongarm	1		1
	Aslt-Intim/Threats/Physical		3	3
	Aslt-Intimidation/Stalking		1	1
	Aslt-Simple Assault		13	13
	Aslt-Simple On Police Officer		1	1
	Fam Off-Domestic Criminal Natu		1	1
	Homicide-Nonfamily Gun	1		1
	Robbery-Car Jacking	1		1
	Robbery-Residential Strongarm	1		1
	Robbery-Street Gun	2		2
	Robbery-Street Id Weapon	4		4
	Robbery-Street Strongarm	4		4
	Sex Aslt-Free Text		3	3
	Sex Aslt-Rape Strongarm	2		2
<b>Persons</b>		<b>18</b>	<b>22</b>	<b>40</b>
Property	Arson-Residence	1		1
	Burg-Forced Entry Non Resident	9		9
	Burg-No Force Entry Non Reside	5		5
	Burg-No Force Entry Residence	4		4
	Damaged Prop-Business		1	1
	Damaged Prop-Free Text		1	1
	Damaged Prop-Priv Veh		10	10
	Damaged Prop-Private		2	2
	Damaged Prop-Public Property		2	2
	Forg-Of Checks		1	1
	Fraud-False Pretenses		1	1
	Fraud-Illeg Use Credit Cards		1	1
	Larc-Free Text	8		8
	Larc-Frm Motor Veh (Prowl)	25		25
	Larc-From Building	3		3
	Larc-Lost/Misdeldivered	1		1
	Larc-Parts/Access/Gas/Veh Strp	2		2
	Larc-Pick Pocketing	3		3
	Larc-Shoplift	2		2
	Stolen Veh-Inside-Rec'd In	8		8
	Stolen Veh-Inside-Rec'd Out	5		5
	Stolen Veh-Outside-Rec'd In SI		6	6
Stolen Veh-Poss Stolen Veh	1		1	
Stolen Veh-Report Unfounded		1	1	
<b>Property</b>		<b>77</b>	<b>26</b>	<b>103</b>
Public Order	Juv Offenders-Ncic Hit/Runaway		1	1
	Liquor-Minor In Tavern Over 18		2	2
	Liquor-Possess Illegally		37	37
	Morals-Urinating In Public		6	6
	Priv-Trespass		75	75
	Pub Ord-Abandoned Prop/Arprt		1	1
	Pub Ord-Cntrl Of Person/Corrtn		1	1
	Pub Ord-Curfew		1	1
	Pub Ord-Found Bikes		2	2
	Pub Ord-Public Intoxication		19	19
	Pub Ord-Public Order Free Text		4	4
	Pub Peace-Disorderly Conduct		4	4
	Pub Peace-Dist The Peace		4	4



500 West "Park" Blocks (North Temple - 400 South *see map for detail*)				
Class	Description	PART I CRIME	Other	6 month total - Offenses Reported
Public Order	Pub Peace-Harassing Communicat		1	1
	Pub Peace-Loud Party		2	2
	Pub Peace-Mentally Ill Subject		2	2
	Pub Peace-Runaway		2	2
	Pub Peace-Susp Activity		7	7
	Pub Peace-Transient		2	2
Public Order			173	173
Public Service	Pub Ord-Ambulance Sick Calls		21	21
	Pub Ord-Comm Action Team		1	1
	Pub Ord-Found Property		8	8
	Pub Ord-Industrial Accident		1	1
	Pub Ord-Lost Prop		10	10
	Pub Ord-Missing Juvenile		1	1
	Pub Ord-Missing Person		4	4
	Pub Ord-Police Assistance		1	1
Public Service			47	47
Society	Comm Sex-Prostitution		1	1
	Comm Sex-Solicitatr N By Female		1	1
	Drug-Amphetamine Possess		1	1
	Drug-Barbiturate Possess		1	1
	Drug-Cocaine Possess		23	23
	Drug-Cocaine Sell		14	14
	Drug-Cocaine Solicitation		1	1
	Drug-Forged/Altered Prescrip		1	1
	Drug-Found Narcotic Equip		1	1
	Drug-Found/Surrendered		1	1
	Drug-Heroin Possess		4	4
	Drug-Heroin Sell		1	1
	Drug-Imitation Drugs		1	1
	Drug-Marijuana Possess		7	7
	Drug-Marijuana Solicitation		1	1
	Drug-Narcotic Equipment Poss		75	75
	Drug-Synthetic Narcotic Poss		2	2
	Escape-Id Type Institution		1	1
	Escape-Out Of State Ncic Hits		4	4
	Escape-Warrants All In State		125	125
	Health-Drugs Misbranded		1	1
	Obst Pol-Criminal Investigatio		3	3
	Obst Pol-Fail To Move On		1	1
	Obst Pol-Failure To Stop Fr Po		3	3
	Obst Pol-Making False Report		5	5
	Obst Pol-Resisting Officer		3	3
	Weap-Carrying Concealed		4	4
Weap-Carrying Prohibited/Speci		1	1	
Society			287	287
Traffic	Traf-Alcohol In Or About A Veh		3	3
	Traf-Driving Under Alcohol/Cib		8	8
	Traf-Hit And Run		2	2
	Traf-Impound/Aband Veh		7	7
	Traf-Moving Traffic Viola		1	1
	Traf-Non Moving Traffic Violat		13	13
	Traf-Non-Reportable Accident		12	12
	Traf-Officer Involved Accident		1	1
	Traf-Reportable Accident		6	6
Traffic			53	53
6 month total - Offenses Reported		95	608	703





Salt Lake City Police - Offenses Reported  
 500 West "Park" blocks ( North Temple - 400 South)  
 Feb 1 thru Jul 31, 2006 (6 months)

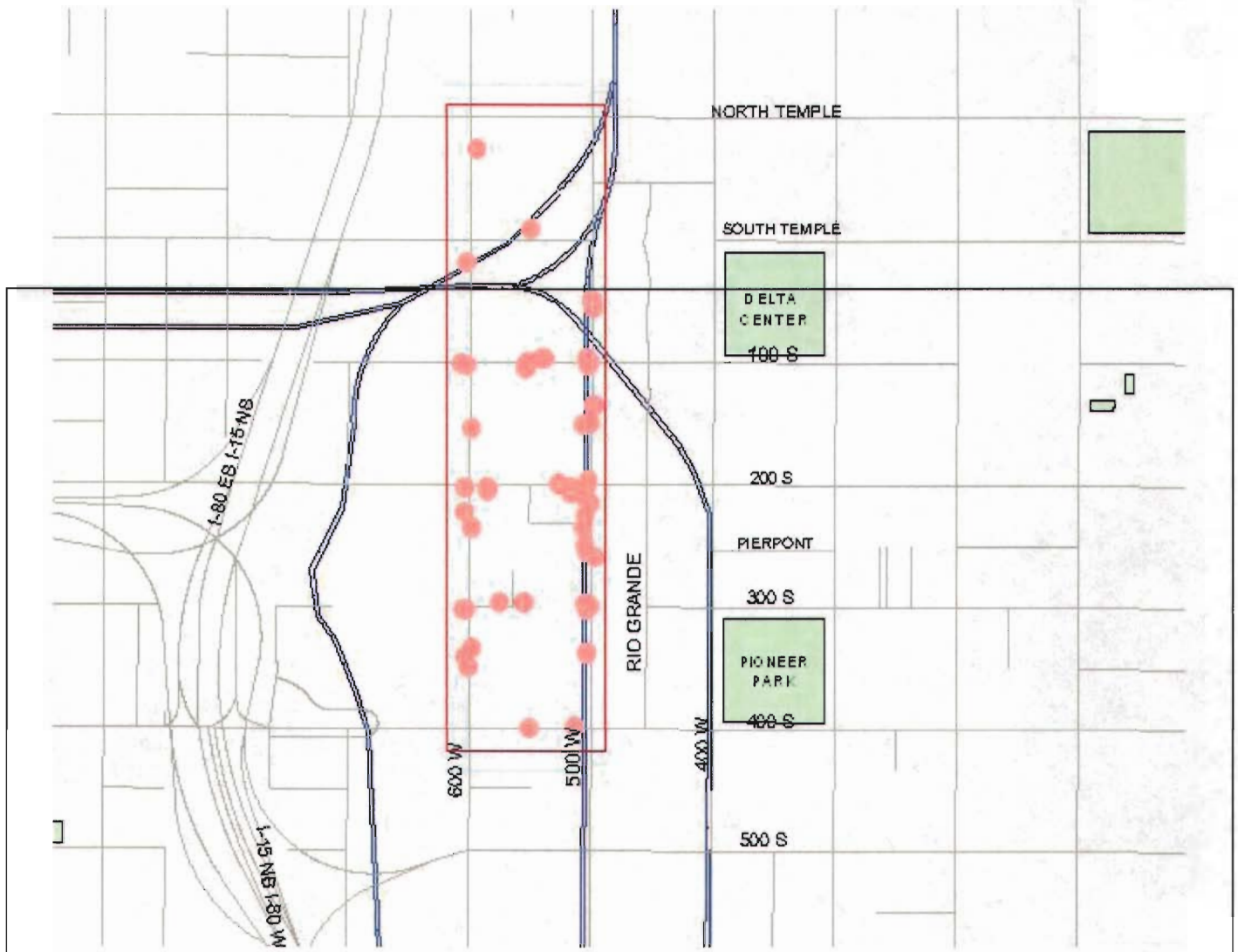
Frequency of Incidents

500 w park blocks clipped.shp

- 1 - 12
- 13 - 27
- 28 - 47



 Railroads.shp  
 Parks.shp





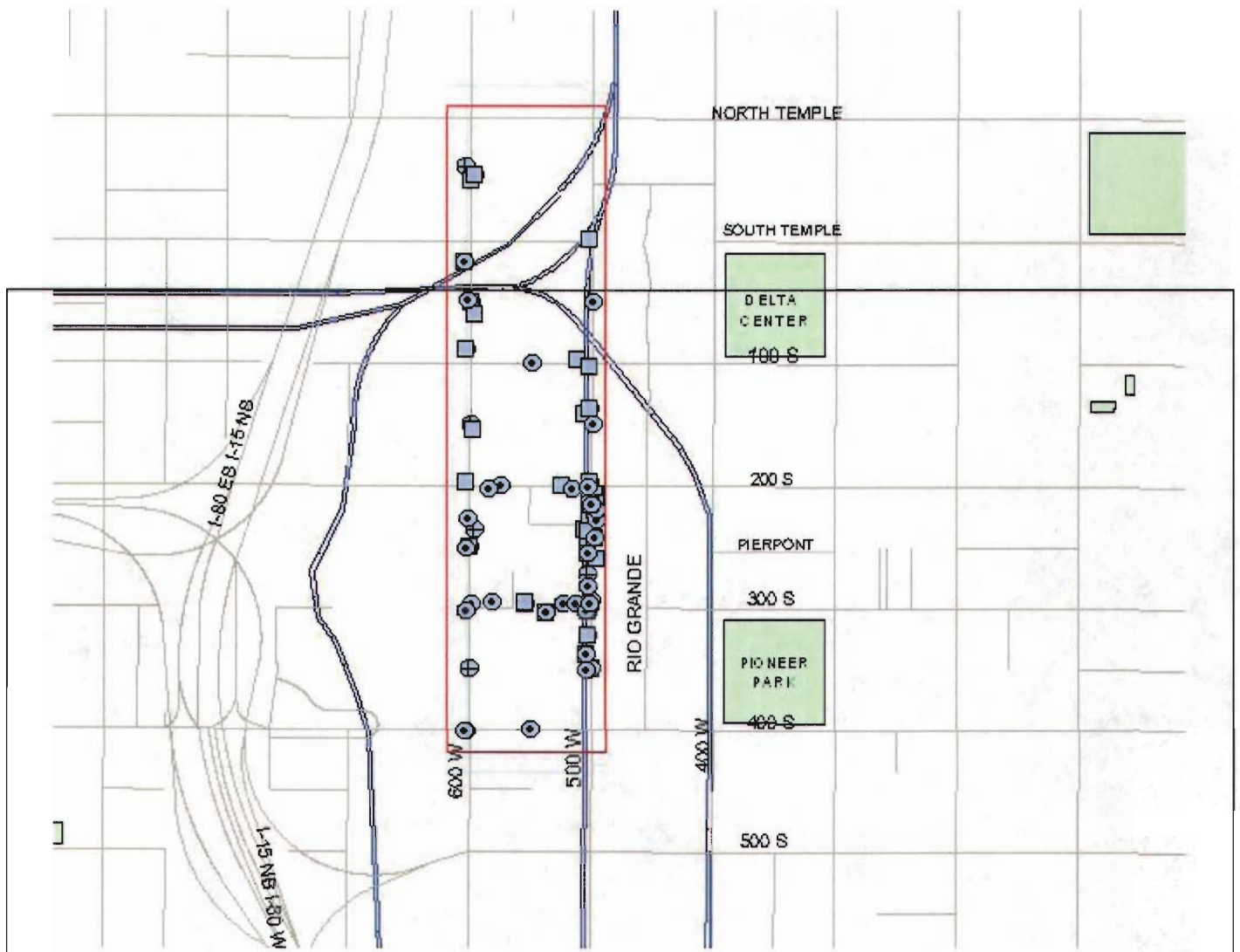
Salt Lake City Police - "Part 1" Offenses Reported  
 500 West "Park" blocks ( North Temple - 400 South)  
 Feb 1 thru Jul 31, 2006 (6 months)

500 w park blocks clipped\_go\_part\_1.dbf

- Part 1 Crimes - 95
-  Railroads.shp
-  Parks.shp







**Salt Lake City Police - Offenses Reported  
 500 West "Park" blocks ( North Temple - 400 South)  
 Feb 1 thru Jul 31, 2006 (6 months)**

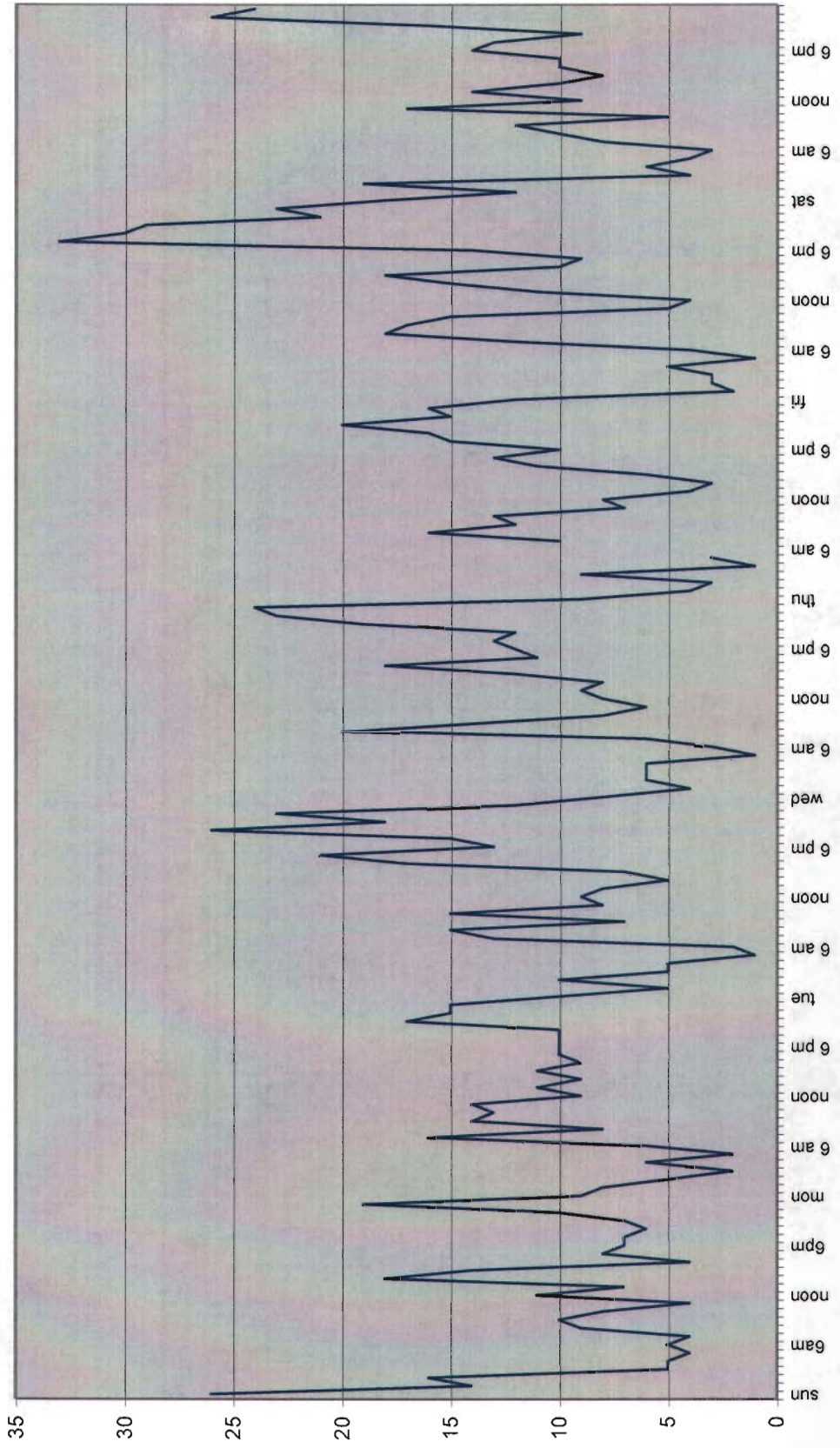
**Drug, Warrant & Trespass**

500 w park blocks clipped\_go\_part\_1.dbf

- ⊕ Drugs - 134
- Warrant - 129
- ⊙ Trespass - 75
- ▲ Railroads.shp
- Parks.shp

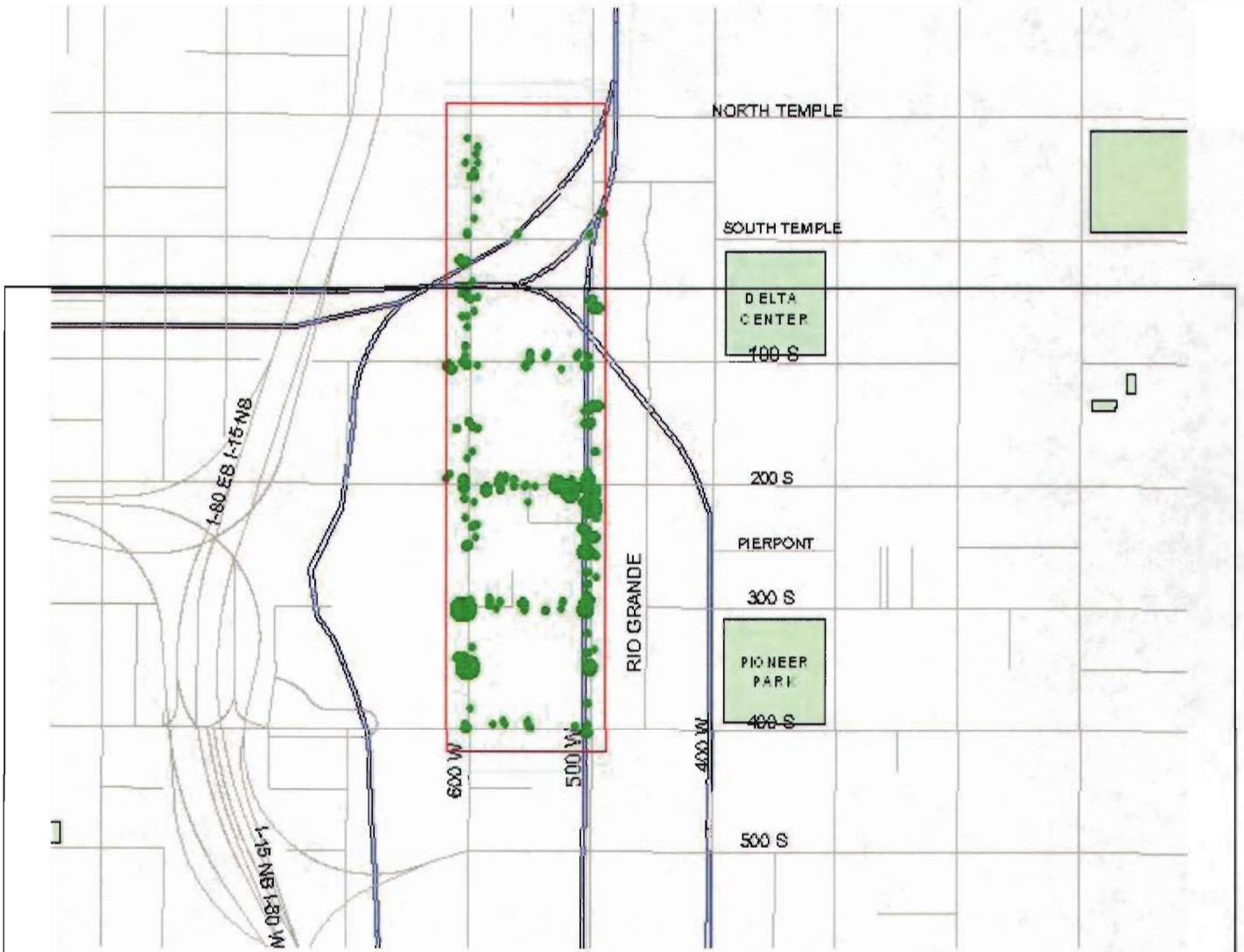


Salt Lake City Police - Dispatched Calls  
Feb 1 thru Jul 31, 2006  
500 West "Park" blocks (N Temple - 400 S)



Salt Lake City Police - Dispatched Complaints												Feb 1 thru Jul 31, 2006													
500 West "Park" blocks												Hour of Day													
Count of OCC_NUM	hour																								
How Received	0	1	2	3	4	5	6	7	8	9	10	11	12	13	14	15	16	17	18	19	20	21	22	23	total
911	13	5	4	7	5	5	7	6	13	8	11	7	5	10	8	10	16	7	17	17	18	12	15	18	244
Telephone	52	25	41	15	11	7	13	21	27	34	32	31	32	31	40	33	33	35	34	40	41	58	72	66	824
OfficerOnView	27	19	17	12	18	4	3	42	56	44	34	23	21	23	20	33	30	40	29	49	50	56	46	49	745
total	92	49	62	34	34	16	23	69	96	86	77	61	58	64	68	76	79	82	80	106	109	126	133	133	1813







**Salt Lake City Police - Offenses Reported  
 500 West "Park" blocks ( North Temple - 400 South)  
 Feb 1 thru Jul 31, 2006 (6 months)**

**Dispatched Complaints (1813 total)**

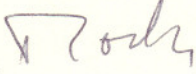
500 w park blocks dp clip to street.dbf


- 1 - 15
- 16 - 42
- 43 - 74
- 75 - 114
- 115 - 281

-  Railroads.shp
-  Parks.shp



**COUNCIL TRANSMITTAL**

**TO:** Rocky Fluhart   
Chief Administration Officer **DATE:** July 18, 2006

**FROM:** Rick Graham, Director   
Public Services Department

**SUBJECT:** Ordinance amendment that designates a section of the 500 West Park Islands as a "Common" area so that the public use hours may be adjusted.

**STAFF CONTACT:** Rick Graham 535-7774  
Boyd Ferguson 535-7796

**DOCUMENT TYPE:** Ordinance

**RECOMMENDATION:** That the City Council amend Section 15.12.010 of the City Code by adding Paragraph B., 500 West Commons, which changes the designation of the property and allows its public use to be restricted during the hours of dusk to dawn.

**BUDGET IMPACT:** None

**BACKGROUND and DISCUSSION:** The entire corridor of the 500 West Park Islands between North Temple and 400 South is currently designated as public park property, and as such, allow daily public access and use between the hours of 5:00 am and 11:00 pm. A section of the corridor between 250 South and 400 South, which is adjacent to the Road Home and other homeless service facilities, is used heavily as a gathering and loitering area for people who seek services from the facilities. This same section of island space is frequently the site of loitering, sleeping, camping, fighting, drug dealing and other illegal activity. It is a site that requires an inordinate amount of police patrolling and presence. To the west of this site is residential property and private business, and to the east is the Rio Grande Depot and private business. All are impacted in some way by the nighttime activity that takes place on this City property.

Though this section of park islands is designated as a park it does not function as a typical park, nor does it contain typical public park amenities such as open space play areas, playgrounds, restrooms or designated activity areas. The islands are formally landscaped, have pathways, sitting areas, waste cans, lights and art pieces. Given its current utility it is not providing the community typical park amenities and under its current design and function, never will.



the local residential and business community, and to aid the Police Department in its efforts to manage activity on the island it is proposed that the park island designation be changed to a "common" area, and that public use be restricted between the hours of dusk to dawn. This recommendation to change the use hours is supported by the Police Department. It should be noted that for the very same reasons the Pioneer Park property had its use hours restricted between dusk and dawn several years ago. That change has produced positive results.

This proposed ordinance amendment does not include the plaza property adjacent to the west side of the Road Home facility. That plaza area was developed several years ago to provide a space off the public sidewalks for homeless service users to gather. Though this space has created its own set of problems, including loitering, late-night gathering, camping, fighting and crime, no change in use hours is being recommended at this time because the plaza space will change dramatically once the 200 South light-rail extension and Gateway expansion projects get under way. Though this plaza area requires a higher degree of policing the Police Department supports no change at this time. Additional signage was added to the plaza area at the Police Department's request, and that signage has aided its enforcement capabilities.

**PUBLIC PROCESS:** No formal public process has been conducted, but the local community council is aware of the proposed changes.



SALT LAKE CITY ORDINANCE  
No. \_\_\_\_\_ of 2006  
(Public Square Amendments)

AN ORDINANCE AMENDING CERTAIN SECTIONS OF CHAPTER 15.12 OF THE SALT LAKE CITY CODE, RELATING TO PUBLIC SQUARES.

Be it ordained by the City Council of Salt Lake City, Utah:

SECTION 1. That Chapter 15.12.020, Salt Lake City Code, be, and the same hereby is, amended to read as follows:

**15.12.020 Areas Designated:**

The following shall be designated as public squares, malls and pleasure grounds, as provided in section 15.12.010 of this chapter, or its successor:

A. Washington Square, described as follows:

Being all of Block 38, Plat "A", Salt Lake City, encompassing the area between Fourth and Fifth South Streets and between State and Second East Streets.

B. 500 West Street Commons, described as follows:

Being all of the following described property, encompassing the median island in 500 West Street between 250 South and 400 South Street:

Beginning south 454.78 feet and east 5.33 feet from the Northwest corner of Block 62, Plat A, Salt Lake City Survey, located in the West half of Section 1, Township 1 South, Range 1 West, Salt Lake Base and Meridian; thence S00°01'22"E 58.24 feet to a point of curve, chord bears S27°40'58"W 7.91 feet; thence southwesterly 8.23 feet along a 8.51 foot radius curve to the right to a point of reverse curve, chord bears S27°39'00"W 11.46 feet; thence southerly 11.92 feet along a 12.34 foot radius curve to the left; thence S00°01'22"E 112.81 feet to the point of curve, chord bears S27°41'37"E 11.46 feet; thence southeasterly 11.92 feet along a 12.34 foot radius curve to the left to a point of reverse curve, chord bears S27°43'41"E 7.91 feet; thence southerly 8.23 feet along a 8.51 foot radius curve to the right; thence S00°01'18"E 133.96 feet to a point of curve, chord bears S27°41'05"W 7.91 feet; thence southwesterly 8.23 feet along a 8.51 foot radius



curve to the right to a point of reverse curve, chord bears S27°39'04"W 11.46 feet; thence southerly 11.92 feet along a 12.34 foot radius curve to the left; thence S00°01'15"E 238.41 feet to a point of curve, chord bears S27°41'33"E 11.46 feet; thence southeasterly 11.92 feet along a 12.34 foot radius curve to the left to a point of reverse curve, chord bears S27°43'34"E 7.91 feet; thence southerly 8.23 feet along a 8.51 foot radius curve to the right; thence S00°01'15"E 33.50 feet to a point of curve, chord bears S10°15'03"W 155.91 feet; thence southwesterly 156.75 feet along a 437.18 foot radius curve to the right to a point to reverse curve, chord bears S10°09'50"W 176.90 feet; thence southerly 177.86 feet along a 491.89 foot radius curve to the left to a point of reverse curve, chord bears S46°45'23"W 8.03 feet; thence westerly 9.00 feet along a 5.51 foot radius curve to the right to a point of compound curve, chord bears N46°47'47"W 8.03 feet; thence northwesterly 9.00 feet along a 5.51 foot radius curve to the right; thence N00°01'15"W 90.58 feet; thence N06°06'32"W 75.43 feet; thence N00°01'15"W 195.47 feet to a point of curve, chord bears N27°41'05"E 7.91 feet; thence northeasterly 8.23 feet along a 8.51 foot radius curve to the right to a point of reverse curve, chord bears N27°39'04"E 11.46 feet; thence northerly 11.92 feet along a 12.34 foot radius curve to the left; thence N00°01'15"W 238.41 feet to a point of curve, chord bears N27°42'58"W 11.46 feet; thence northwesterly 11.92 feet along a 12.33 foot radius curve to the left to a point of reverse curve, chord bears N27°41'32"W 7.91 feet; thence northerly 8.23 feet along a 8.52 foot radius curve to the right; thence N00°01'18"W 133.96 feet to a point of curve, chord bears N27°40'58"E 7.91 feet; thence northeasterly 8.23 feet along a 8.51 foot radius curve to the right to a point of reverse curve, chord bears N27°39'09"E 11.46 feet; thence northerly 11.92 feet along a 12.33 foot radius curve to the left; thence N00°01'22"W 112.81 feet to a point of curve, chord bears N27°42'16"W 11.46 feet; thence northwesterly 11.91 feet along a 12.33 foot radius curve to the left to a point of reverse curve, chord bears N27°42'16"W 7.92 feet; thence northerly 8.23 feet along a 8.52 foot radius curve to the right; thence N00°01'22"W 233.87 feet to a point of curve, chord bears N77°31'49"E 39.06 feet; thence northeasterly 54.14 feet along a 20.00 foot radius curve to the right to a point of compound curve, chord bears S12°28'22"E 188.52 feet; thence southeasterly 190.01 feet along a 437.22 foot radius curve to the right to the point of beginning, contains 1.63 acres more or less.

SECTION 2. That Chapter 15.12.030, Salt Lake City Code, be, and the same hereby is, amended to read as follows:

**15.12.030 Use Restrictions:**

The following restrictions relating to public parks and playgrounds under this code, as amended, shall be fully applicable to the public properties designated in section 15.12.020 ~~of this chapter~~,



~~or its successor~~, but not the restrictions relating to the proximity of class B nonprofit clubs to public parks, and, in the case of the public property designated in section 15.12.020B, not the restrictions relating to the proximity of class C beer establishments, class C nonprofit clubs, or any other establishments that sell or serve alcoholic beverages, to public parks, for the reasons set forth in the statement of purpose in section 15.12.010 of this chapter, or its successor:

Section 5.68.020 of this code; section 5.74.200 of this code; section 11.12.080 of this code; chapter 15.08 of this title (except that 500 West Street Commons shall be closed to the public from dusk until dawn), or their successors.

SECTION 3. EFFECTIVE DATE. That this Ordinance shall take effect on the date of its first publication.



Passed by the City Council of Salt Lake City, Utah, this \_\_\_\_\_ day of \_\_\_\_\_, 2006.

\_\_\_\_\_  
CHAIRPERSON

ATTEST:

\_\_\_\_\_  
CHIEF DEPUTY CITY RECORDER

Transmitted to the Mayor on \_\_\_\_\_.

Mayor's Action: \_\_\_\_\_ Approved. \_\_\_\_\_ Vetoed.

\_\_\_\_\_  
MAYOR

ATTEST:

\_\_\_\_\_  
CHIEF DEPUTY CITY RECORDER

(SEAL)

Bill No. \_\_\_\_\_ of 2006

Published: \_\_\_\_\_.